



ePMP™ Sector Antenna

Cambium Networks has deployed more than five million radios around the world achieving unparalleled degrees of scalability. Based on this vast experience, Cambium Networks has designed an antenna solution that enables network operators to increase the spectral efficiency and scale of their ePMP™ point-to-multipoint (PMP) distribution access networks. Wireless Service Providers deploying networks in 5 GHz spectrum will find this sector antenna for 90° and 120° applications especially well-suited for high-density networks requiring frequency re-use and wide-band spectrum coverage.

KEY DEPLOYMENT ADVANTAGES

Frequency Reuse

Designed for ABAB channel re-use (two channels covering four sectors), the sector antenna has 35 dB front to back ratio including a wide aperture in the rear-facing direction.

Channel Flexibility

Consistent gain from 4.9 to 6.0 GHz allows the operator to select a channel anywhere in the band and achieve the expected performance.

Consistent Coverage

Excellent null fill capabilities of the antenna allow for broad geographical coverage within a sector even near the base of the tower and the edges of the sector.

Designed for the Installer

Small compact design, integrated ePMP radio mount and GPS antenna integration.

Predictable Performance

The sector antenna is integrated into Cambium Networks LINKPlanner. The 3D model shows coverage at all elevations and across the azimuth.

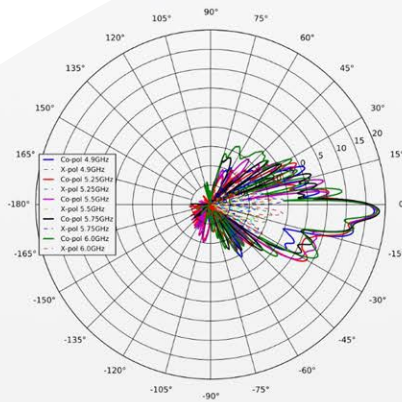
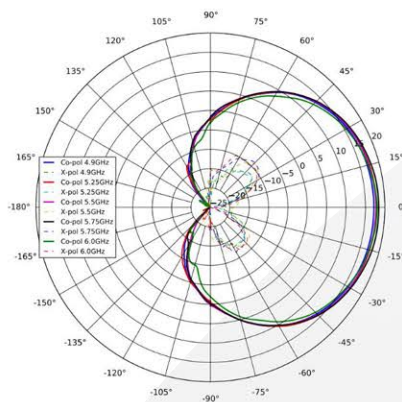




SPECIFICATIONS

PRODUCT DETAILS

- Model Number : C050900D021A
- Frequency Range : 4.9GHz to 5.97GHz
- Gain : 18 dBi
- 3 dB Beamwidth - Azimuth : 90 degrees
- 6 dB Beamwidth - Azimuth : 120 degrees
- 3 dB Beamwidth - Elevation : 6 degrees
- Electrical Downtilt : -2 degrees
- Polarization : Horizontal and Vertical
- Port-to-Port Isolation : > - 30 dB
- Front-to-Back Ratio : 35 dB
- Maximum Input Power : 5W
- Input Impedance : 50 ohms
- Mounting Connectors : 2 x RP SMA
- Mounting Hardware : Included for mounting to mast diameters 5 cm to 10 cm
-10 to +5 degree tilt
Hardware included to connect ePMP access point to back of antenna body
- Physical Dimensions : Antenna Body: 594 mm x 157 mm x 110 mm
w/ ePMP 1000 Access Point: 594 mm x 157 mm x 150 mm
- Weight : Antenna Body: 4.0 kg
w/ ePMP 1000 Access Point and Mounting Brackets: 6.6 kg
- Environmental : IP65
- Radome Material : UV Protected ABS
- Operating Temp : -40°C to 60°C



Why Rising Connection is using equipment designed and built by Cambium Networks?

- High quality and worldwide longevity track record of installations across a diverse application base
- Using establish world best practices in design and materials with full support of both Australian and International Standards
- Constant evolution of hardware and improvements in firmware for the benefit of the customer
- Established interoperability with various equipment and propriety security systems
- Full portfolio of solution development services and cloud management

This demonstrates to Rising Connection that you will have the Quality, Reliability and Product Support.