



**Unbreakable Internet.  
VPN Connectivity. Bandwidth Bonding.**

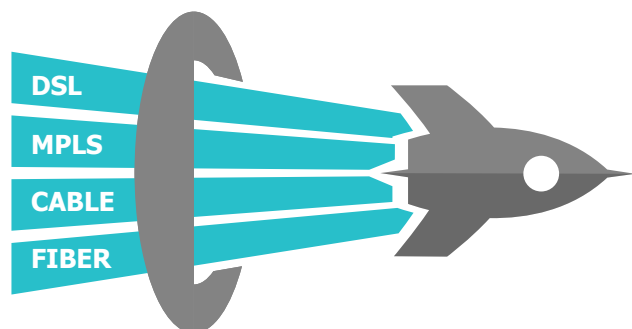
# Balance 20



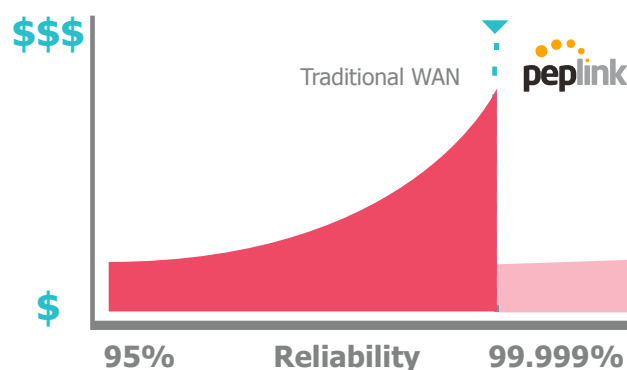
## Advanced Dual-WAN Router for an affordable price.

The Peplink Balance 20 supports dual-wan connectivity, switching between the 2 GE WAN links is automatic and seamless.

## Greater Speeds, Absolute Reliability, up to 90% Cost Reduction

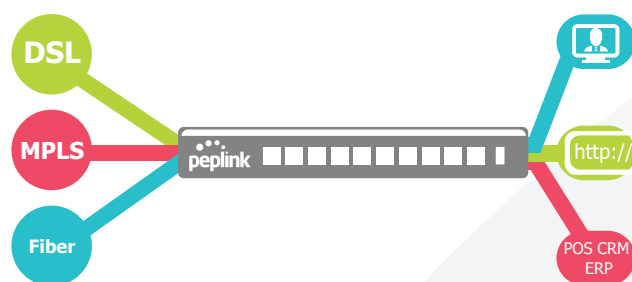


Using SpeedFusion™ bandwidth bonding technology, you can combine multiple DSL, cable, 4G LTE, and 3G links – up to 13 of them into a single high-speed SD-WAN connection. This enables you to access headquarters at greater speeds than you could achieve with a single link.



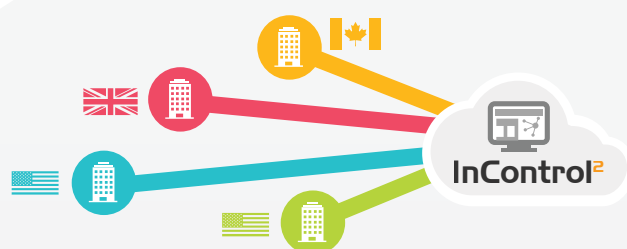
With each link you add, the SD-WAN connection increases its reliability. Use multiple connection technologies from diverse ISPs to provide connectivity resilience at a fraction of what it would cost using traditional WAN alone.

## Intelligent VPN Traffic Routing



Guarantee the session integrity of sensitive applications such as point-of-sale or credit card transactions using Hot failover. Stream HD videos and have smooth videoconferences using SpeedFusion VPN technology. Use your commodity links to offload for your bulk traffic to the public Internet, while saving your critical traffic for private links.

## Simple, Powerful Cloud Management



Using InControl, our powerful SD-WAN controller, you can easily perform a multitude of tasks from a browser. Set up a star, mesh, or point-to-point VPN with just a couple of clicks. Configure groups of devices at once to save time. Schedule automatic firmware updates for your devices.



## SPECIFICATIONS

### Product Details

- Model: Balance 20
- Product Code: BPL-021
- Designed For: Power User & Home Office

### Capacity

- Ethernet WAN Ports: 2 (GE)<sup>1</sup>
- LAN Ports: 4 (GE)
- Simultaneous Dual-Band 802.11ac/a/b/g/n Wi-Fi AP: No
- Embedded 4G LTE: No
- SIM Card Size: No
- USB WAN Modem Port<sup>1</sup>: 1
- Recommended Users<sup>2</sup>: 1-60
- Stateful Firewall Throughput<sup>3</sup>: 150Mbps

### Core Functionality

- 802.1q VLANs supported: 16
- Port-Based VLAN: Yes
- Load Balancing & Failover: Yes
- Load Balancing Algorithms: 8
- Drop-In Mode: No
- Inbound Load Balancing: No
- InControl Cloud Management: Yes

### PepVPN/SpeedFusion Functionality

- PepVPN: Yes<sup>%</sup>
- SpeedFusion Hot Failover: No
- SpeedFusion WAN Smoothing: No
- SpeedFusion Bandwidth Bonding: No
- Number of PepVPN/SpeedFusion Peers<sup>4</sup>: 2/5<sup>!</sup>
- PepVPN Throughput (256-bit AES)<sup>3</sup>: 30Mbps
- PepVPN Throughput (No Encryption)<sup>3</sup>: 60Mbps

### AP Controller Functionality

- Manage Pepwave AP Series: Yes
- Maximum Number of AP Supported: 10
- Manage Remote AP & Multiple Config Profiles<sup>6</sup>: No

### IPsec/L2TP/PPTP VPN Functionality

- IPsec VPN (Network-to-Network)<sup>5</sup>: Yes
- Number of IPsec Tunnels: 2
- Remote User Access: Yes
- L2TP VPN / OpenVPN / PPTP VPN Server: Yes
- Maximum PPTP/L2TP/OpenVPN Users: 15
- GRE (Network-to-Network): 5

### Advanced QoS Functionality

- Bandwidth Usage Monitor: Yes
- QoS for VoIP and E-commerce: Yes
- User Groups Bandwidth Control: Yes
- Web Blocking: Yes
- Web Filtering Blacklist: No

### Hardware

- Operating Temperature: -40° – 65°C
- Dimensions: 35 x 260 x 133 mm
- Weight: 1 kg
- LACP (802.3ad) NIC Bonding: No
- Power Consumption: 15W
- 1U Rackmount: No
- High Availability: No
- LAN Bypass: No
- Dual Hot Swap Power Supply: No

### Certifications

- FCC, CE, RoHS

### Warranty

- 1-Year Limited Warranty

### Package Content

- Balance 20 Router
- 12V 2A Power Supply (ACW-601)

<sup>1</sup> For a list of supported modems, please refer to <https://www.peplink.com/technology/4g3g-modem-support/>.

<sup>2</sup> Recommendation for sizing purposes only. No software restrictions applied.

<sup>3</sup> Router Throughput and PepVPN/SpeedFusion Throughput is based on Ethernet frame sizes of 1280 or 1518 bytes. Actual performance can vary across different networking environments. Figures apply to the latest hardware revision.

<sup>4</sup> Number of peer Peplink or Pepwave devices you can connect using SpeedFusion VPN.

<sup>5</sup> IPsec only supports connection with Cisco, Juniper, Peplink or Pepwave devices.

<sup>6</sup> Balance 20 comes with AP Controller Standard, which supports up to two configuration profiles with multiple SSIDs, meaning that all APs will share the same configuration, and you can only manage APs on the local physical LAN.

+ Balance 20 has an extra WAN port which can be activated through license key.

% Balance 20 requires firmware 6.1 to support PepVPN.

! 2 PepVPN Peers are enabled by default. Can be increased to 5 Peers using license PVN-LC-05.



## PRODUCT DATASHEET

# Balance 20

## ORDERING INFORMATION

Product Code	Model	Description
BPL-021	Balance 20	2x GE WAN ports and 4x GE LAN ports.

## FEATURE ADD - ON

Product Code	Product Name	Description
BPL-021-LC-WAN	WAN Port Activation License	Activate WAN 3 on Balance 20
PVN-LC-05	PepVPN License Key for Velocity and BRI family	Enables up to 5 PepVPN connections

### Why Rising Connection is using equipment designed and built by Peplink?

- Industry leader in both ISP & Data Bonding across multiple technology platforms
- Reliable hardware from entry level professional equipment through to advanced Enterprises solutions
- Worldwide supported and local support here in Australia by fully trained technicians
- Reliable and secure redundancy paths for mission critical sites
- Designed for maximum possible business uptime

This demonstrates to Rising Connection that you will have the Quality, Reliability and Product Support.