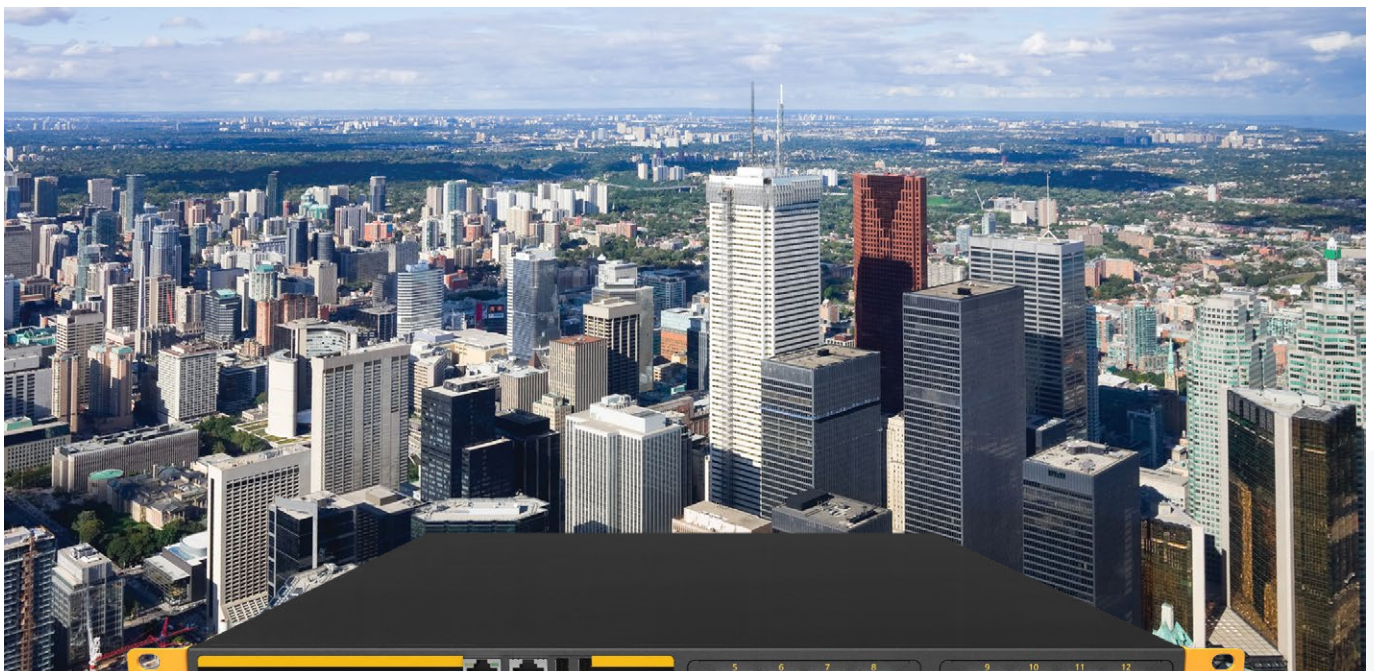




Unbreakable Internet.
VPN Connectivity. Bandwidth Bonding.

Balance 2500



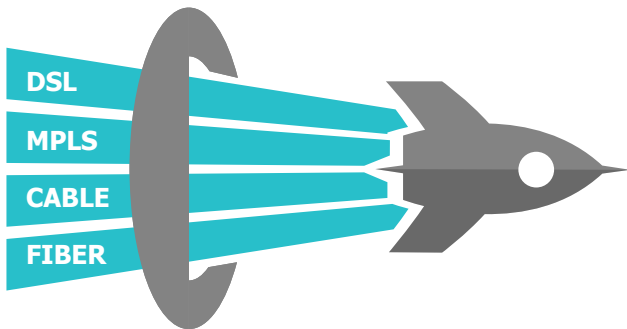
Balance 2500, Balance 2500-SFP, Balance 2500-2SFP (Top to Bottom)

Flagship Balance SD-WAN Router.

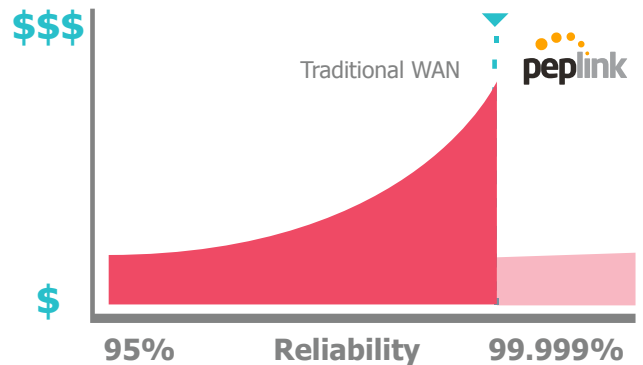
With 8 Gbps throughput, 12 WAN connections, dual hot-swappable power supplies and a comprehensive range of features all fitted into a 19-inch Rackmount chassis, the Balance 2500 SD-WAN router is designed to deliver fast and reliable connectivity to the most demanding large enterprises.



Greater Speeds, Absolute Reliability, up to 90% Cost Reduction

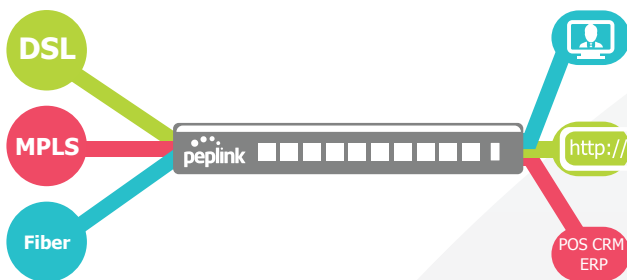


Using SpeedFusion™ bandwidth bonding technology, you can combine multiple DSL, cable, 4G LTE, and 3G links – up to 13 of them into a single high-speed SD-WAN connection. This enables you to access headquarters at greater speeds than you could achieve with a single link.



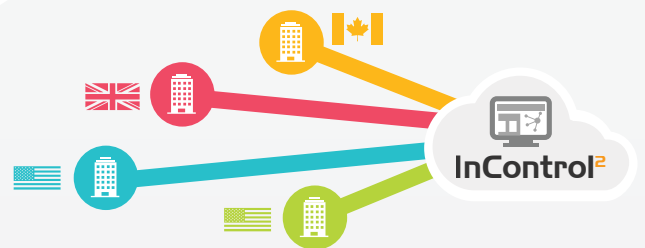
With each link you add, the SD-WAN connection increases its reliability. Use multiple connection technologies from diverse ISPs to provide connectivity resilience at a fraction of what it would cost using traditional WAN alone.

Intelligent VPN Traffic Routing



Guarantee the session integrity of sensitive applications such as point-of-sale or credit card transactions using Hot failover. Stream HD videos and have smooth videoconferences using SpeedFusion VPN technology. Use your commodity links to offload for your bulk traffic to the public Internet, while saving your critical traffic for private links.

Simple, Powerful Cloud Management



Using InControl, our powerful SD-WAN controller, you can easily perform a multitude of tasks from a browser. Set up a star, mesh, or point-to-point VPN with just a couple of clicks. Configure groups of devices at once to save time. Schedule automatic firmware updates for your devices.



SPECIFICATIONS

Product Details

- Model: Balance 2500
- Product Code: BPL-2500*
- Designed For: Large Enterprise/Campus

Capacity

- Ethernet WAN Ports: 12 (GE) / 4 (GE) & 2 (10G SFP+)*
- LAN Ports: 8 (GE) / 2 (10G SFP+)*
- Simultaneous Dual-Band 802.11ac/a/b/g/n Wi-Fi AP: No
- Embedded 4G LTE: No
- SIM Card Size: No
- USB WAN Modem Port¹: 1
- Recommended Users²: 5000-20000+
- Stateful Firewall Throughput³: 8Gbps

Core Functionality

- 802.1q VLANs supported: 1024
- Port-Based VLAN: Yes
- Load Balancing & Failover: Yes
- Load Balancing Algorithms: 8
- Drop-In Mode: Yes
- Inbound Load Balancing: Yes
- InControl Cloud Management: Yes

PepVPN/SpeedFusion Functionality

- PepVPN: Yes
- SpeedFusion Hot Failover: Yes
- SpeedFusion WAN Smoothing: Yes
- SpeedFusion Bandwidth Bonding: Yes
- Number of PepVPN/SpeedFusion Peers⁴: 4000
- PepVPN Throughput (256-bit AES)³: 2Gbps
- PepVPN Throughput (No Encryption)³: 2Gbps

AP Controller Functionality

- Manage Pepwave AP Series: Yes
- Maximum Number of AP Supported: 1500
- Manage Remote AP & Multiple Config Profiles⁶: Yes

IPsec/L2TP/PPTP VPN Functionality

- IPsec VPN (Network-to-Network)⁵: Yes
- Number of IPsec Tunnels: 800
- Remote User Access: Yes
- L2TP VPN / OpenVPN / PPTP VPN Server: Yes
- Maximum PPTP/L2TP/OpenVPN Users: 1000
- GRE (Network-to-Network): 5

Advanced QoS Functionality

- Bandwidth Usage Monitor: Yes
- QoS for VoIP and E-commerce: Yes
- User Groups Bandwidth Control: Yes
- Web Blocking: Yes
- Web Filtering Blacklist: Full

Hardware

- Operating Temperature: 0° – 40°C
- Dimensions: 44 x 426 x 550 mm
- Weight: 12 kg
- LACP (802.3ad) NIC Bonding: Yes*
- Power Consumption: 230W
- 1U Rackmount: Yes
- High Availability: Yes
- LAN Bypass: Yes
- Dual Hot Swap Power Supply: Yes

Certifications

- FCC, CE, RoHS

Warranty

- 1-Year Limited Warranty

* Balance 2500 are available different configurations. Please refer to ordering information for details.

1 For a list of supported modems, please refer to <https://www.peplink.com/technology/4g3g-modem-support>.

2 Recommendation for sizing purposes only. No software restrictions applied.

3 Router Throughput and PepVPN/SpeedFusion Throughput is based on Ethernet frame sizes of 1280 or 1518 bytes. Actual performance can vary across different networking environments. Figures apply to the latest hardware revision.

4 Number of peer Peplink or Pepwave devices you can connect using SpeedFusion VPN.

5 IPsec only supports connection with Cisco, Juniper, Peplink or Pepwave devices.

6 Balance 2500 comes with AP Controller Pro, which supports multiple configuration profiles with multiple SSIDs, and you can manage remote APs outside the local physical LAN.



ORDERING INFORMATION

Product Code	Model	Description
BPL-2500	Balance 2500	12x GE WAN ports and 8x GE LAN ports. Supports LACP (802.3ad) NIC bonding. SpeedFusion capable
BPL-2500-SFP	Balance 2500	12x GE WAN ports and 2x 10G SFP+ LAN ports. SpeedFusion capable.
BPL-2500-2SFP	Balance 2500	4x GE WAN ports, 2x10G SFP+ WAN ports and 2x10G SFP+ LAN ports. SpeedFusion capable.

Why Rising Connection is using equipment designed and built by Peplink?

- Industry leader in both ISP & Data Bonding across multiple technology platforms
- Reliable hardware from entry level professional equipment through to advanced Enterprises solutions
- Worldwide supported and local support here in Australia by fully trained technicians
- Reliable and secure redundancy paths for mission critical sites
- Designed for maximum possible business uptime

This demonstrates to Rising Connection that you will have the Quality, Reliability and Product Support.