

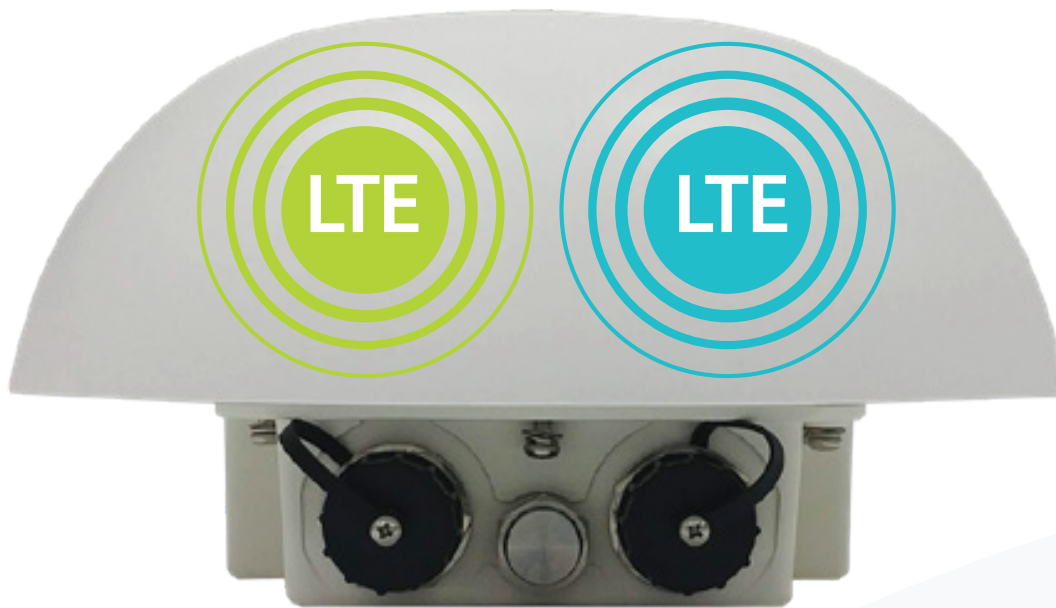


PRODUCT DATASHEET  
MAX HD2 Dome

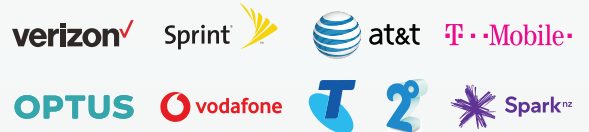
Dual Cellular Router for Mobile  
Outdoor Deployments



# MAX HD2 Dome



Compatible With:



And worldwide 4G LTE/3G carriers

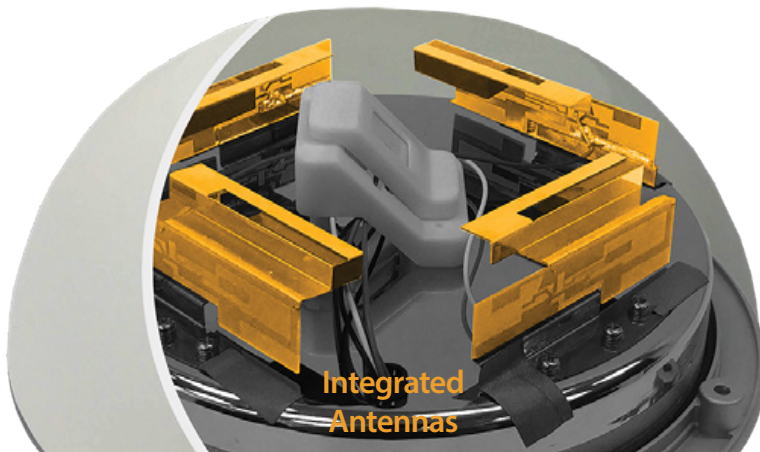
### Achieve Dual-Cellular Connectivity, No Expensive RF Cable, Zero Cable Loss

The HD2 Dome provides dual-cellular Bandwidth Bonding in an IP67 enclosure that has a minimal profile on the rooftop while providing maximum signal. With redundant SIM, the HD2 Dome supports two cellular radios and four SIM cards. Combine the HD2 Dome with the SIM Injector, and the number of cards increases to twelve.





## PRODUCT DATASHEET MAX HD2 Dome

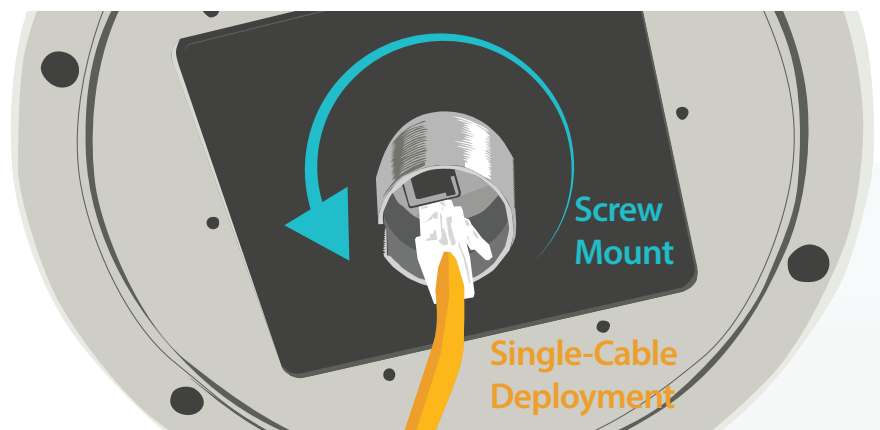


### Minimum Cable Loss, Best Cellular Signal Quality

Most outdoor deployments require a centrally placed router attached to strategically placed antennas. With the HD2 Dome, the antennas are placed in the same integrated enclosure as the cellular radios. This arrangement minimises cable loss, giving you the best signal possible.

### Simple Installation Running a Single Ethernet Cable

The HD2 Dome has a M35 screw mount, and only requires a single Ethernet cable to install. For wall or pole mounted deployments, the HD2 Dome comes with an Ethernet splitter and a mounting rack that provides a multitude of installation options.



### Choose Between 8 Additional SIM With the SIM Injector. Anywhere, Anytime

With the addition of the SIM bank, the HD2 Dome can support up to 12 SIM at your fingertips. Simply connect an Ethernet cable between the SIM Injector and the HD2 Dome. The SIM Injector is capable of PoE output, so you don't need to add another PoE switch to your deployment.





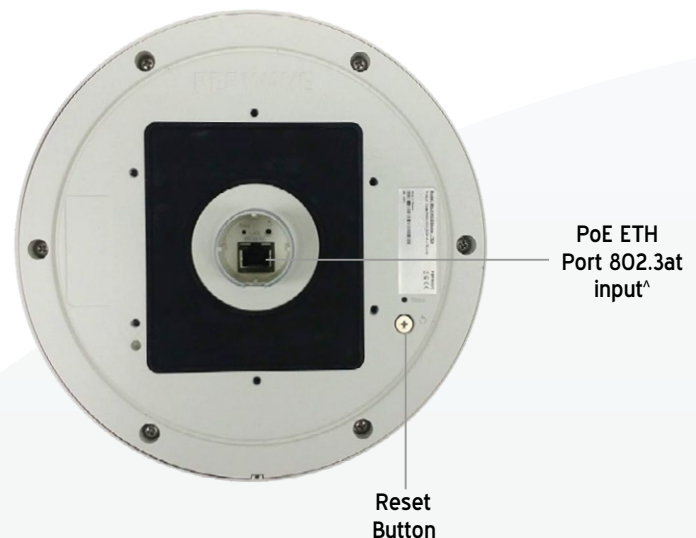
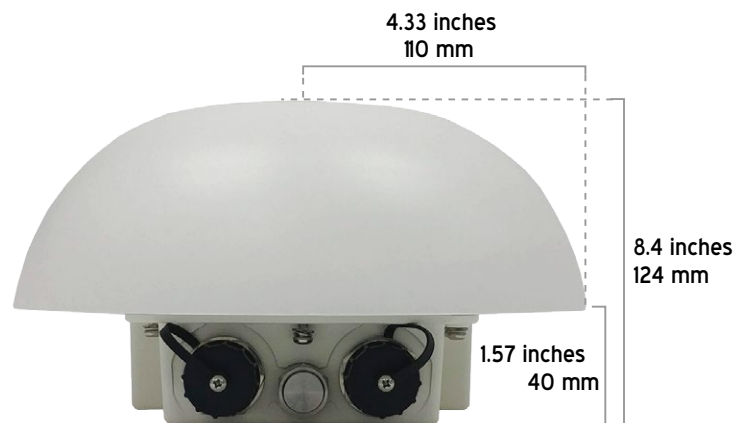
## PRODUCT DATASHEET MAX HD2 Dome

### SPECIFICATIONS

- **WAN Interface:** 2x Embedded LTE Modems with Redundant SIM Slots<sup>#</sup>
- **LAN Interface:** 1x 10/100/1000M Ethernet Ports<sup>^</sup>
- **Downlink/Uplink Datarate:** 300/50Mbps (LTEA), 600/150Mbps (LTE-A Pro)
- **Enclosure:** Rugged outdoor IP67
- **Recommended Users:** 150
- **Cellular Antenna:** 2x2 Internal MIMO Antennas, 1x Internal GPS Antenna
- **Included Antenna:** Built-In Omni Antenna, Antenna gain: 4dBi
- **Power Input:** 1x Power over Ethernet 802.3at
- **Power Consumption:** 20W (max.)
- **Dimensions:** 110mm (radius) x 124mm (height)
- **Weight:** 1700 grams (With Ethernet Splitter), 1200 grams (Without Ethernet Splitter)
- **Operating Temperature:** -40° – 65°C
- **Humidity:** 15% – 95% (non-condensing)
- **Certifications:** FCC, CE, RoHS, Shock and Vibration Resistance: EN 61373:1999 IEC 61373:1999
- **Warranty:** 1-Year Limited Warranty
- **Package Content:** MAX HD2 Dome, Ethernet Splitter, 2x Waterproof Ethernet Connector (ACW-112), Mounting Kit Set

<sup>#</sup> SIM Injector is available separately

<sup>^</sup> Ethernet LAN port can be split into two LAN ports using the included splitter (1x LAN 802.3af PoE out, 1x LAN PoE in)





## PRODUCT DATASHEET MAX HD2 Dome

### ORDERING INFORMATION

Product Code	Carrier	Modems	4G Bands	3G Bands
MAX-HD2-DOM-M-LTEA-P	Asia Pacific / CAT-6	2	B1, B3, B5, B7, B8, B18, B19, B21, B28, B38, B39, B40, B41	WCDMA/HSPA+/DC-HSPA+: B1, B5, B8, B9, B19 UMTS: B6 TD-SCDMA: B39
MAX-HD2-DOM-M-LTEA-K	Global / CAT-12	2	4G LTE-A Pro: B1, B2, B3, B4, B5, B7, B8, B9, B12, B13, B18, B19, B20, B26, B28, B29, B30, B32, B41, B42, B43, B46, B48, B66	HSPA+: B1, B2, B4, B5, B6, B8, B9, B19

### FEATURE ADD-ON

Product Code	Description
SIM-BK8-4E-56V	SIM Injector
ACW-112	Waterproof Ethernet Adaptor
ACW-650	Puma Thread to HD Dome
ACW-651	1" 14 TPI Female to Puma Thread
ACW-652	1" 14 TPI Male Adapter

#### Why Rising Connection is using equipment designed and built by Peplink?

- Industry leader in both ISP & Data Bonding across multiple technology platforms
- Reliable hardware from entry level professional equipment through to advanced Enterprises solutions
- Worldwide supported and local support here in Australia by fully trained technicians
- Reliable and secure redundancy paths for mission critical sites
- Designed for maximum possible business uptime

This demonstrates to Rising Connection that you will have the Quality, Reliability and Product Support.