



Dual 4G LTE Outdoor Mobile Router

MAX HD2 IP67



Compatible With:



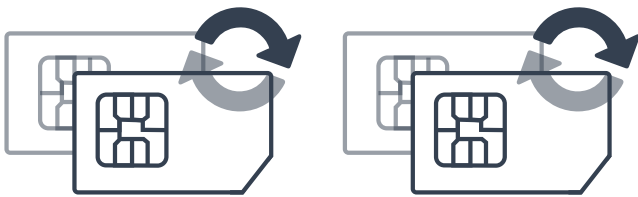
And worldwide 4G LTE/3G carriers

The HD2 IP67 offers dual embedded cellular modems and PoE support, all encased in a shock and vibration certified, waterproof enclosure that's more than a match for almost any environment.



PRODUCT DATASHEET MAX HD2 IP67

Dual Cellular for Multiple Carrier



The HD2 IP67 includes two built-in outdoor 4G LTE/3G modems. It allows you to use the same or different cellular providers for bandwidth bonding or eliminating blind spots. List of supported 4G LTE carriers at: peplink.com/lte-networks/

SpeedFusion Bandwidth Bonding and Seamless Failover

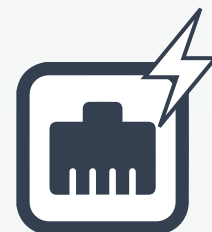
SpeedFusion™
VPN Bonding Technology



SpeedFusion bandwidth bonding technology bonds all connected bandwidth into a single superfast stream, using the same or different cellular providers.

Super-Duty IP67 Enclosure, Shock and Vibration Certified

Optional PoE Input



Its waterproof IP67 metal enclosure stands up to dust, vibration, and inclement weather. And, it is certified shock and vibration resistant, making it a great choice for construction, drilling, and other heavy-duty applications.

Cut down on cabling and simplify deployments. The HD2 IP67 supports 802.3at PoE input, so one wire is all you need for both connectivity and power. 802.3at PoE Injector is available separately.



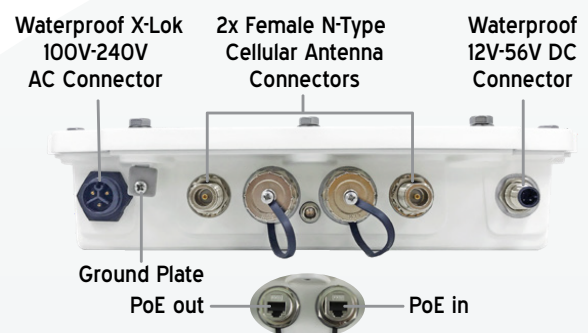
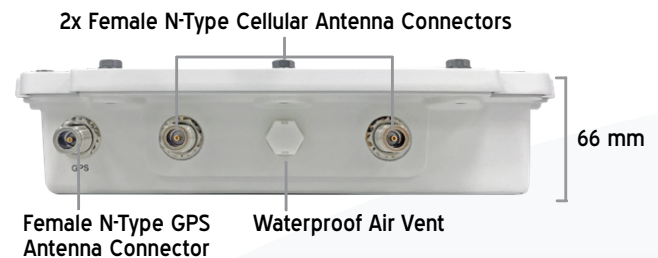
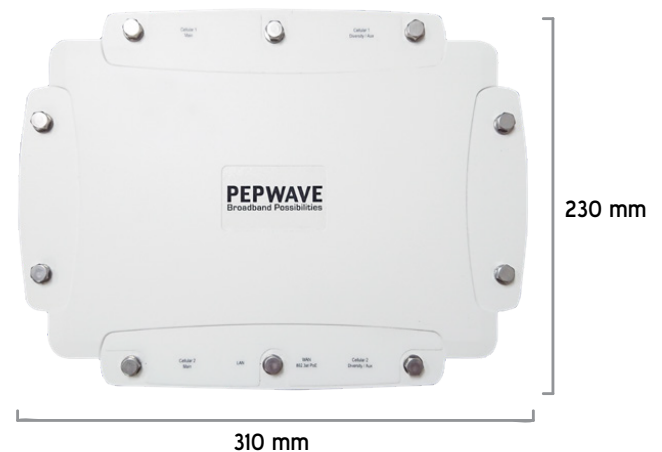
PRODUCT DATASHEET MAX HD2 IP67

SPECIFICATIONS

- **WAN Interface:** 1x 10/100/1000M Ethernet Port, 2x Embedded LTE Modems
- **LAN Interface:** 1x 10/100/1000M Ethernet Port
- **Router Throughput:** 400Mbps
- **Recommended Users:** 25-150
- **Antenna Connectors:**
4x Female N-Type Cellular Antenna Connectors,
1x Female N-Type GPS Antenna Connector
- **Power Input:** Power over Ethernet 802.3at PoE+[#],
AC Input 100V-240V*, DC Input 12V-56V
- **Power Consumption:** 25W (max.)
- **Dimensions:** 230 x 310 x 66 mm
- **Weight:** 2.65 kg
- **Operating Temperature:** -40° – 65°C
- **Humidity:** 15% – 95% (non-condensing)
- **Certifications:** FCC, CE, RoHS, IC,
RF Port Lightning Immunity: ITU-T K.20 (+/- 1.5 kV),
Shock and Vibration Resistance: EN 61373: 2010
IEC 61373: 2010
- **Warranty:** 1-Year Limited Warranty
- **Package Content:** MAX HD2 IP67,
Waterproof 100V-240V AC Female Connector,
Waterproof 12V-56V DC Female Connector,
2x Waterproof Ethernet Connector Kit (ACW-112),
Mounting Kit (ACW-723)

PoE Injector is available separately.

* Support PSE output.





PRODUCT DATASHEET MAX HD2 IP67

ORDERING INFORMATION

Product Code	Carrier	Embedded Modems	4G Bands	3G Bands
MAX-HD2-M-LTEA-P-IP67	Asia Pacific / CAT-6	2	4G LTE-A: B1, B3, B5, B7, B8, B18, B19, B21, B28, B38, B39, B40, B41	WCDMA/HSPA+/DC-HSPA+: B1, B5, B8, B9, B19 UMTS: B6 TD-SCDMA: B39
MAX-HD2-M-LTEA-WK-IP67	Global* / CAT-12 / CAT-6	2	Cellular 1: 4G LTE-A Pro: B1, B2, B3, B4, B5, B7, B8, B9, B12, B13, B18, B19, B20, B26, B28, B29, B30, B32, B41, B42, B43, B46, B48, B66 Cellular 2: 4G LTE-A: B1, B2, B3, B4, B5, B7, B8, B12, B13, B20, B25, B26, B29, B30, B41	Cellular 1: HSPA+: B1, B2, B4, B5, B6, B8, B9, B19 Cellular 2: WCDMA/HSPA+/DC-HSPA+: B1, B2, B3, B4, B5, B8

* China & HK TD LTE are excluded.

FEATURE ADD-ON

Product Code	Description
ACW-107	802.3af/at PoE Injector
ACW-112	Waterproof Ethernet Adaptor
ACW-622	Includes 1x 56V Power Supply Enables 802.3at/af PoE Output Ports (PoE License automatically applied after kit purchase)
SIM-BK8-4E-56V	SIM Injector, 8x SIM cards capacity, 4x 10/100/1000 LAN ports, 56V DC (compatible with HW revision 4 or above)
MAX-HD-020-SPF	Activates 20 PepVPN/SpeedFusion Peers

Why Rising Connection is using equipment designed and built by Peplink?

- Industry leader in both ISP & Data Bonding across multiple technology platforms
- Reliable hardware from entry level professional equipment through to advanced Enterprises solutions
- Worldwide supported and local support here in Australia by fully trained technicians
- Reliable and secure redundancy paths for mission critical sites
- Designed for maximum possible business uptime

This demonstrates to Rising Connection that you will have the Quality, Reliability and Product Support.