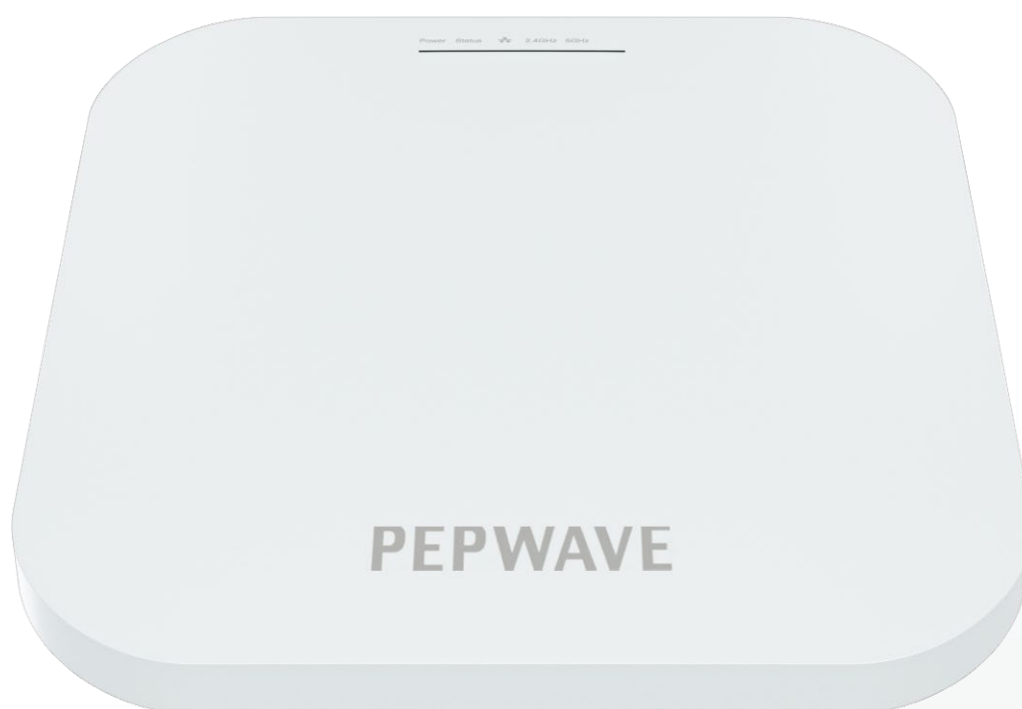




PRODUCT DATASHEET  
AP One AX



# AP One AX



## Better Coverage and Speed with Wi-Fi 6

**Deploy Anywhere, Manage Centrally**

**Enterprise-Grade Fast Roaming**

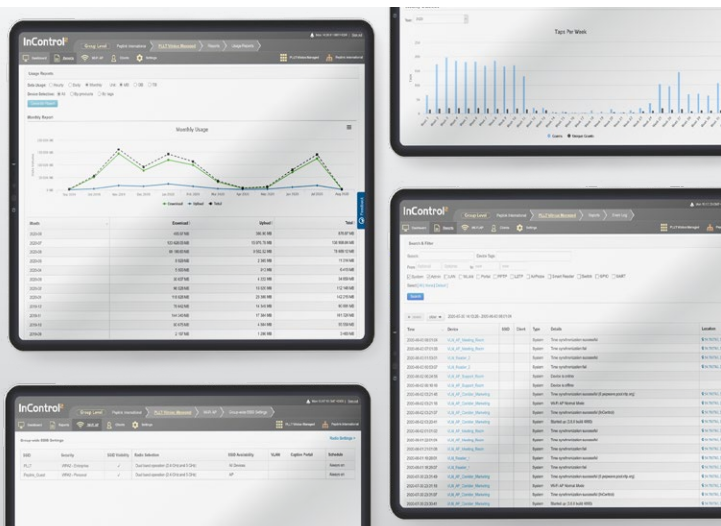
**Turnkey or Custom Captive Portals**

**Seamless Peplink SD-WAN Integration**

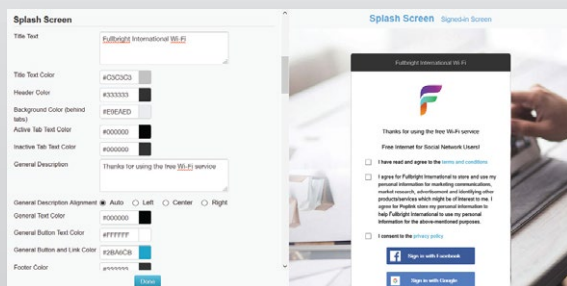
## Manage Centrally, No Extra Hardware Needed

Each AP One AX comes equipped with InControl central management. View the health and data usage of your network from any web browser.

Centrally manage your network's SSID and radio settings from a single pane of glass. Use the searchable event log to quickly diagnose your entire network.

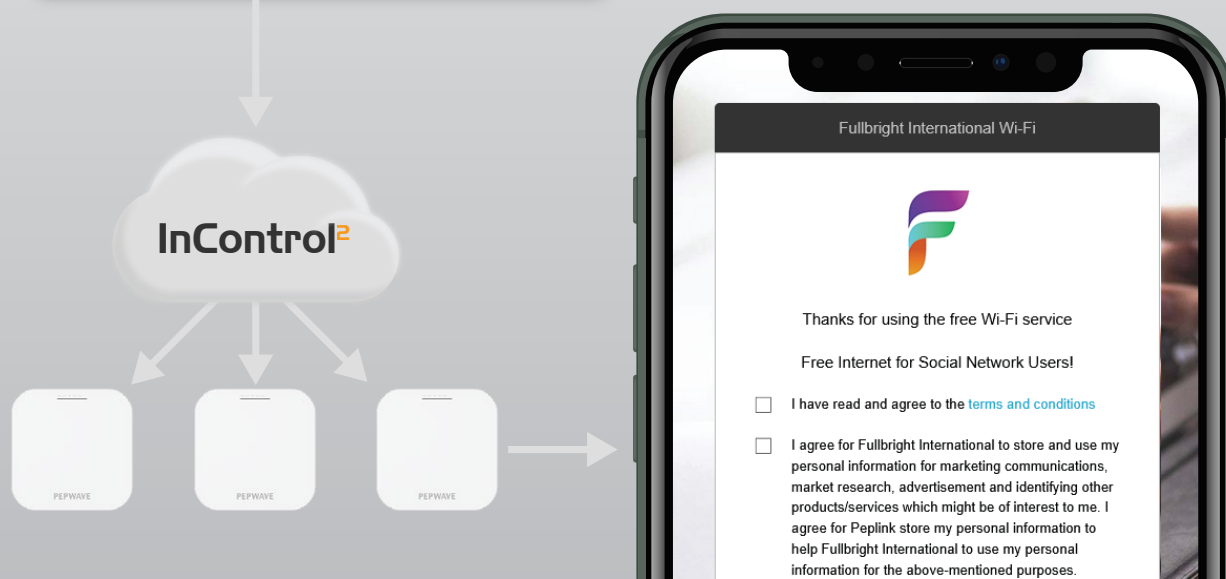


## Turnkey or Custom Captive Portals



Customise your captive portal as little or as much as you would like. Right out of the box, it includes a captive portal ready for immediate use.

For a more branded user experience, you can edit every aspect of the captive portal using InControl.



## Simply Better Wi-Fi

### Wi-Fi 6: Faster, Better

This technology is 45% faster than Wi-Fi 5, has 4x more device capacity, and consumes less power for connected devices.

### Enterprise-Grade Fast Roaming

This device supports 802.11k, v, and r, providing users with a more seamless roaming experience between access points.



## Seamless Peplink SD-WAN Integration

The AP One AX works seamlessly with other services in the Peplink ecosystem, providing unique network capabilities, unmatched network flexibility and ease of use.

### InControl Central Management

Monitor network health on a single dashboard. Push configuration profiles on multiple devices at once. Remotely access the Web Admin of any device.

### Balance/MAX/FusionHub

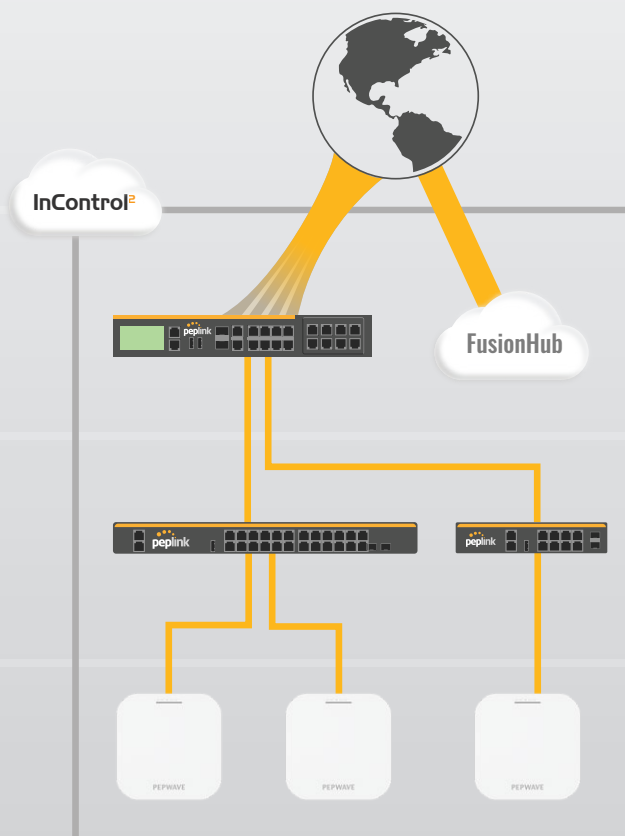
Provides unbreakable connectivity by combining multiple WANs. Works with InControl to centralise VLAN, firewall, and outbound policy.

### SD-Switch

Works with InControl to remotely configure and activate PoE ports. Monitor power consumption.

### AP One

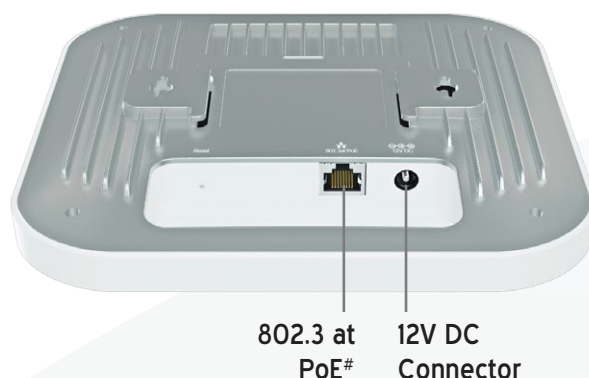
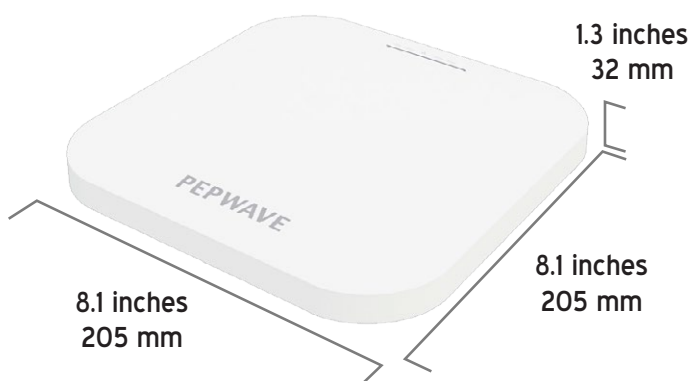
Works with InControl to centralise SSIDs, radio settings, and deliver captive portals.





## SPECIFICATIONS

- **Ethernet Port:** 1x 2.5 Multigigabit Ethernet
- **Wi-Fi Standard:** 1x 2.4Ghz 802.11b/g/n/ax,  
1x 5Ghz 802.11a/n/ac/ax
- **Data Rates:** 4X4 MU-MIMO,  
2.4 GHz: up to 1148 Mbps,  
5 GHz: up to 2400 Mbps
- **Channel Width:** 20/40/60/80 MHz
- **Recommended Concurrent Users Per Radio:** 256
- **SSID Per Radio:** 16
- **Transmit Power:** 2412 – 2472 MHz: up to 17dBm,  
5180 – 5825 MHz: up to 17dBm
- **Included Antenna:** Built-in Omni Antenna,  
Antenna gain: 5dBi for 2.4GHz, 5dBi for 5GHz
- **Enclosure:** Plenum-rated, Indoor Plastic
- **Dimensions:** 205 x 205 x 32 mm
- **Weight:** 785 grams
- **Power Input:** DC Jack: 12V DC,  
AC Adapter: AC Input 100V – 240V,  
DC Output 12V, 2.5A\*, 802.3 at PoE#
- **Power Consumption:** 23W (max.)
- **Operating Temperature:** 0 - 40°C
- **Certifications:** FCC, CE, RoHS
- **Warranty:** 1-Year Limited Warranty
- **Package Content:** AP One AX,  
Ceiling Mount Base (9/16" T-Rail),  
Ceiling Mount Base (15/16" T-Rail),  
Mounting Screw Set



\* Optional feature.  
# PoE Injector is available separately.



## FEATURES

### Network

Bridge Mode  
Router (NAT) Mode  
Wireless Distribution System (WDS)  
Support for PPPoE, Static IP, DHCP  
Management VLAN  
Spanning Tree Protocol  
IPv6 passthrough

### Radio

Multiple SSID  
Auto Channel Selection  
Transmit Power Adjustment  
Neighbour AP Detection

### Client Management

Per SSID  
VLAN with QoS (802.1p/802.1q)  
Bandwidth Control  
MAC Address Filtering  
Layer 2 Client Isolation  
Limit on Max. Number of Client  
Per Client  
VLAN with RADIUS  
VLAN with VLAN Pool  
Bandwidth Control  
Multicast Filter  
IGMP Snooping/Multicast  
Enhancement

### AP Security

Open  
WPA/WPA2/WPA3-Personal  
WPA/WPA2-Enterprise

### Captive Portal

By InControl

### Device Management

Web Administrative Interface  
InControl Cloud Management  
Peplink AP Controller  
SNMP v1, v2c and v3

## ORDERING INFORMATION

Product Code	Product Name	Description
APO-AX	AP One AX	4x4 MIMO Wi-Fi 6 AP for Business, manageable by InControl 2. Simultaneous Dual-Band 802.11ax/ac/b/g/n

## ADD-ON FEATURE

Product Code	Description
ACW-107	802.3af/at PoE Injector, compatible with MAX Hotspot and AP One AX
ACW-602	1x 12V 3A Power Supply, compatible with MAX HD2 and AP One AX

### Why Rising Connection is using equipment designed and built by Peplink?

- Industry leader in both ISP & Data Bonding across multiple technology platforms
- Reliable hardware from entry level professional equipment through to advanced Enterprises solutions
- Worldwide supported and local support here in Australia by fully trained technicians
- Reliable and secure redundancy paths for mission critical sites
- Designed for maximum possible business uptime

This demonstrates to Rising Connection that you will have the Quality, Reliability and Product Support.