



Enterprise SD-WAN router for
Medium Branches



Balance 310X



Affordable High Performance

The Balance 310X uses all GE ports and offers a routing throughput of 2.5 Gbps. It provides all the connectivity needed to support small and medium sized business operations.



2.5 Gbps
of Throughput



Unbreakable Connectivity with LTE

The Balance 310X provides built-in LTE for seamless failover. Patented SpeedFusion technology combines multiple connections for jitter-free calls and high-speed transfers.

Rugged Industrial-Grade Design

The Balance 310X has a fanless design and a wide temperature range. Drop it into demanding environments and run it for years without worry.



Scalable Management

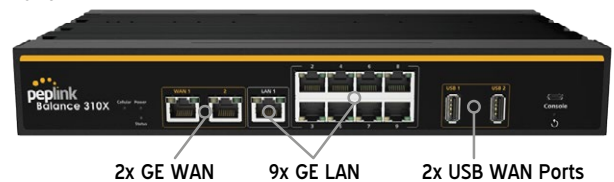
The Balance 310X comes with the InControl central management system. Easily centralise firewall rules, outbound policy, VLAN, device configurations and more.

SPECIFICATIONS

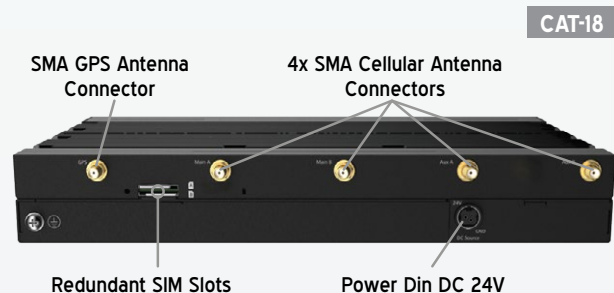
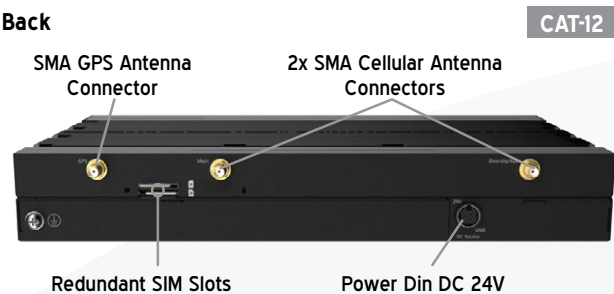
- **WAN Interface:** 1x Embedded LTEA-PRO Modem with Redundant SIM Slots, 2x 10/100/1000M Ethernet, 2x USB 2.0 Interface
- **LAN Interface:** 9x 10/100/1000M Ethernet
- **Router Throughput:** 2.5 Gbps
- **PepVPN Throughput (No Encryption):** 600 Mbps
- **PepVPN Throughput (256-bit AES):** 500 Mbps
- **Cellular Data Rate[@] (Downlink/Uplink):**
CAT 12: 600 Mbps/150 Mbps, CAT 18: 1.2 Gbps/150 Mbps
- **Recommended Users:** 50-500
- **Cellular and GPS Antenna Connector:**
2x SMA Antenna Connectors (for CAT-12)
4x SMA Antenna Connectors (for CAT-18)
1x SMA GPS Antenna Connector
- **Power Input:** Power Din DC: 12V - 30V
- **Power Consumption:** 30W (max.)
- **Dimensions:** 43 x 292 x 177 mm
- **Weight:** 3.3 kg
- **Operating Temperature:** -40° – 65°C
- **Humidity:** 15% – 95% (non-condensing)
- **Certifications:** FCC, CE, RoHS
- **Warranty:** 1-Year Limited Warranty
- **Package Content:** Balance 310X,
1x PSU 24V 2.5A (ACW-647),
2x or 4x LTE/5G Antennas (ACW-234),
1x GPS Antenna (ACW-232),
Ear L-Mounts kit (ACW-513),
Rubber Foot Pad Set,
Grounding Cable



Front



Back



[@] Theoretical maximum data rates

Expansion Module for B310X



SPECIFICATIONS

- **Interface:** 1x Embedded Cellular Modems with Redundant SIM Slots
- **Antenna Connectors:** 4x SMA Antenna Connectors, 1x SMA GPS Antenna Connector
- **5G Cellular Data Rate* (Downlink / Uplink):** CAT-18: 1.2 Gbps/150 Mbps
- **Dimensions:** 22 x 292 x 88 mm
- **Weight:** 1 kg



ORDERING INFORMATION

Product Code	Carrier / Category	Embedded Modems	4G Bands	3G Bands
BPL-310X-LTEA-K-T	Global / CAT-12	1	B1, B2, B3, B4, B5, B7, B8, B9, B12, B13, B18, B19, B20, B26, B28, B29, B30, B32, B41, B42, B43, B46, B48, B66	B1, B2, B4, B5, B6, B8, B9, B19
BPL-310X-GLTE-G-T	Global / CAT-18	1	B1, B3, B25(B2), B66(B4), B26(B5/B18/B19), B7, B8, B12(17), B13, B14, B20, B28, B29, B30, B32, B71, B38, B39, B40, B41, B42, B43, B46, B48	B1, B2, B4, B5(B19), B8
EXM-310X-GLTE-G <small>(Expansion Module for B310X with 1x LTE-A Pro CAT-18 modem)</small>	Global / CAT-18	1	B1, B3, B25(B2), B66(B4), B26(B5/B18/B19), B7, B8, B12(17), B13, B14, B20, B28, B29, B30, B32, B71, B38, B39, B40, B41, B42, B43, B46, B48	B1, B2, B4, B5(B19), B8

FEATURE ADD-ON

Product Code	Description
SFN-LC-30	Up to 30 SpeedFusion Peers License Key for Balance 310X

Why Rising Connection is using equipment designed and built by Peplink?

- Industry leader in both ISP & Data Bonding across multiple technology platforms
- Reliable hardware from entry level professional equipment through to advanced Enterprises solutions
- Worldwide supported and local support here in Australia by fully trained technicians
- Reliable and secure redundancy paths for mission critical sites
- Designed for maximum possible business uptime

This demonstrates to Rising Connection that you will have the Quality, Reliability and Product Support.