



3G/4G/LTE Smart Signal Booster



Cel-Fi GO G31



Note: Only available for portable/vehicle/vessel installs as of 01st July 2022 by a directive from Nextivity due to end-of-life for required components.

The World's First All-in-One Cellular Coverage Solution for Indoor/Outdoor Stationary and Mobile Applications.

Designed to solve cellular coverage issues for indoor and outdoor applications, the Cel-Fi GO G31 Smart Signal Repeater is the first carrier-class cellular coverage solution to offer industry-leading signal gain. Through artificial intelligence and Nextivity's award-winning IntelliBoost signal processing, GO G31 delivers the industry's best voice and data wireless performance. The system is also guaranteed to be unconditionally network safe and does not interfere with other wireless devices. Plus, GO G31 is NEMA 4 rated to provide reliable coverage in any setting.

Industry-Leading Signal Gain: By leveraging Nextivity's award-winning IntelliBoost® chipset, GO is engineered to deliver unmatched cellular performance and signal gain up to 100 dB, which is over 1000x stronger than any other solution.

Indoor/Outdoor: GO G31 is designed to offer reliable cellular connectivity for indoor and outdoor environments. With its IP54 rating, the system is built to be weather resistant for outdoor use.

3G/4G/LTE Multi-Carrier Support with Carrier Switching: Easily select your network operator/carrier from the WAVE app

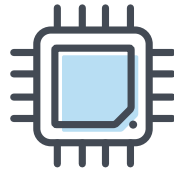


Key Features



Maximum Gain

Industry Leading 3G/4G Voice and Data (65 dB Mobile / 100 dB Stationary depending on the region)



Best Performance

Smart Signal Booster with IntelliBoost® Chipset Smart Technology



Ease of Setup

Easy Setup for Installers and Maximised by AntennaBoost



Cel-Fi WAVE

Mobile Device Application for System Set up and Changing Modes and Carriers



Weather Resistant

IP54 Rated for Indoor or Outdoor Installations



Network Safe

Carrier Approved with No Noise Guaranty

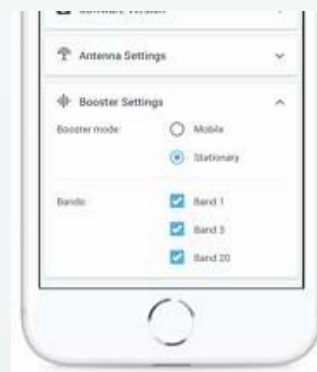
Flexibility at your fingertips



Operator Switching

Selecting your network operator is easy. Just download the Cel-Fi WAVE app and select your Mobile Network Operator/Carrier from the Settings page.

[Watch the video](#)



Mode Switching

Switch between Mobile and Stationary through the Cel-Fi WAVE app. Simply connect to your booster and select the Mode from the Settings page.

[Watch the video](#)



Stationary Mode



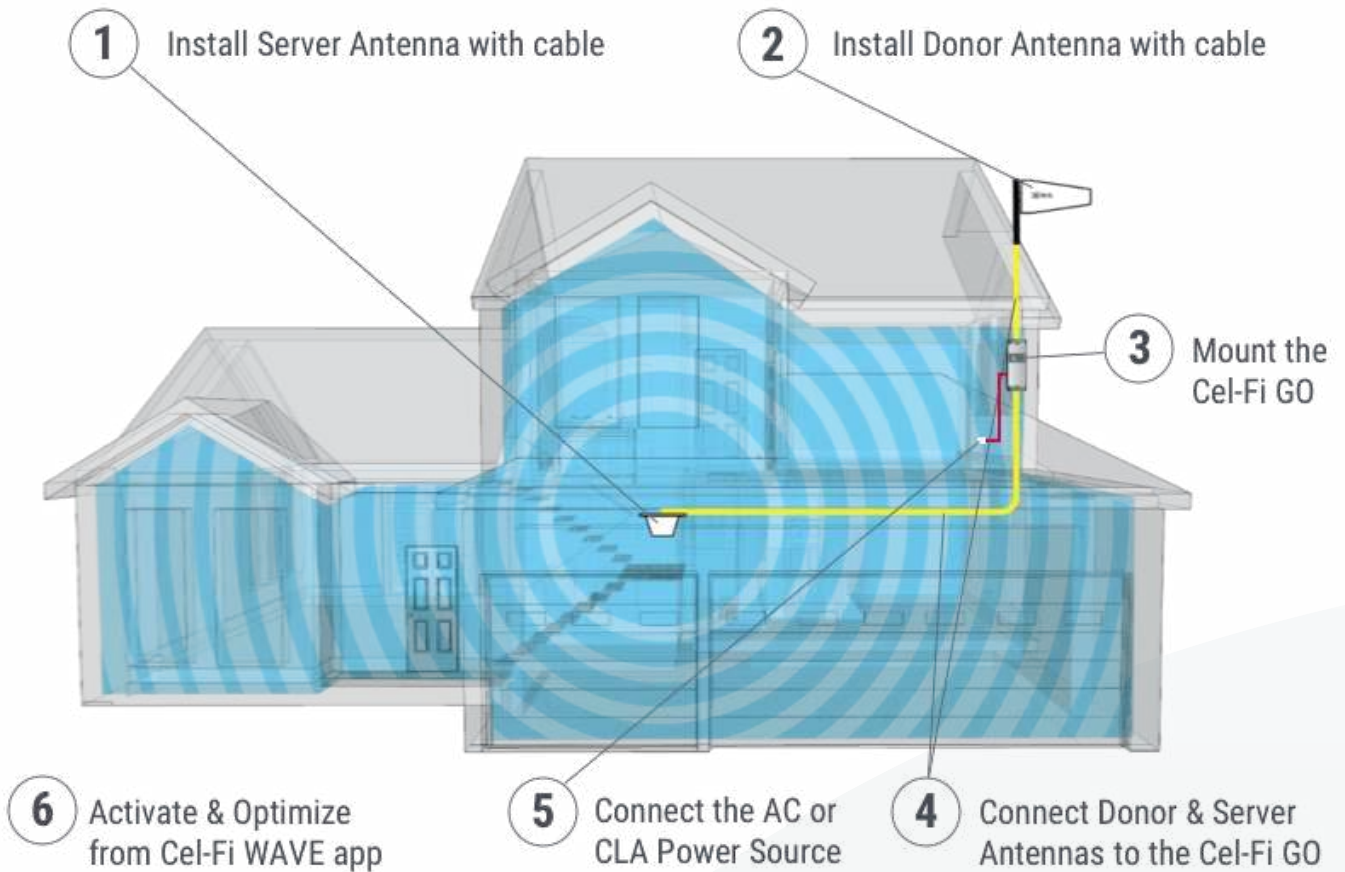
Providing coverage up to 1,500 m² per system (15,000 ft²), GO G31 is ideal for a wide range of installations, including commercial properties, government buildings, small manufacturing operations, agricultural settings, rural areas, businesses, and large homes.

Mobile Mode



The GO G31 all-in-one Smart Signal Repeater is also the best solution for addressing the universal challenge of poor cellular coverage on the move. Simply select the appropriate donor/server antenna bundle to achieve the best voice and data wireless performance for vehicles and boats.

Get setup in 6 easy steps





Specifications

System Features	Smart Signal Booster™
	Two Versions available <ul style="list-style-type: none"> • Stationary Unit: includes AC Power Supply • Mobile Unit: includes 12V CLA Power Supply
	A variety of carrier options are available
	LED User Indicators for Mode and Status
	IP-54 rated for use in harsh conditions
	Cel-Fi GO is a cabled solution using an outside Donor antenna and an inside Server antenna
	Selectable modes: WCDMA/LTE/AUTOMATIC
	Simple, built-in, self-test
	Unlocked: Cell phones do not need to be registered
	Support for Cel-Fi WAVE mobile & desktop application
	End-to-end cellular communication encryption without additional risk of vulnerability
	Rigid cast-aluminum casing with integrated mounting holes
	Conduction cooling
Wireless Features	Smart Signal Booster™
	Supports voice and data services: WCDMA/HSPA+/LTE (FDD)
	System Gain: <ul style="list-style-type: none"> • Stationary Unit: Up to 100dB system gain • Mobile Unit: Up to 70dB system gain
	Bluetooth Low-Energy (BTLE) communications with smartphones for connection to the Cel-Fi WAVE mobile app
	Automatic Gain Control (AGC) based on fast real-time echo-cancellation
	Advanced digital echo-cancellation (>30dB) and channel select filtering algorithms
	Cel-Fi actively manages the cellular link between the cell tower and user devices
	Extremely linear RF front-end
	Adaptive signal equalisation
	Based on Nextivity's 3rd-generation (ARES) chipset
Mobile Network and Network Protection Features	Unconditionally network safe
	Available Carrier Configurations: <ul style="list-style-type: none"> • Telstra (Bands 3/5/28) • Vodafone (Bands 3/8/28) • Optus (Bands 3/8/28)
	Cel-Fi supports multiple cellular channels with bandwidths from 5 to 20 MHz
	Total system relay bandwidth of 20 MHz



	Support for 3GPP Rel 10 features
	Seamless integration with the Macro networks
	Provider-specific booster: Cel-Fi boosts service only for the Operator PLMNIDs the device is authorised and configured for
	Software-managed system intelligence prevents uplink system gain from exceeding path loss, eliminating unnecessary rise in base station noise level
	Uplink Muting Mode automatically shuts down uplink cellular transmissions when no active user equipment is detected
	System shuts down by Operator's network command or failure detection
	User/System Registration options available, to help MNOs understand booster deployments
System Benefits	Stationary or Mobile (Nomadic) cellular coverage
	May be used in any number of conventional installation scenarios, or to replace outdated or illegal repeaters
	Single button control allows user to select WCDMA(3G), LTE(4G) or AUTOMATIC to let GO relay the best available technology
	Ability to learn and adapt to changing network channels or network rebranding
	No ongoing maintenance needed, nor reliance upon Internet, GPS, or handsets to be configured on the system
	Software Updates and technical support, with the Cel-Fi WAVE mobile app
	Any subscriber device from the configured Operator will benefit from improved coverage
	Cellular communications remain encrypted and secure
	User Interface (UI) LEDs provide visual feedback for ease of setup
	Easy to mount
	Silent operation
Wireless Benefits	Mobile Network and Network Protection Benefits
	Automatically adapts to fit area to be covered, from small vehicles to large homes or offices up to 1200 m ² (13,000 ft ²), or more for open spaces
	The highest performance, fully-certified, signal booster possible in the power class
	Real-time adapting capability ensures the best possible user experience, in actual user environments, which are constantly changing, with a variety of signals present
	Bluetooth LE enables the system to communicate with smartphones and the Cel-Fi WAVE mobile app, improving the user experience and adding capability to the product
	The Linearity of Nextivity's high-performance precision-calibrated RF front end virtually eliminates Intermodulation Desense (IMD) issues
	Maximises signal-to-noise (SNR) ratio—provides better data rates without negatively impacting macro cells
	Allows for 30dB more gain than traditional boosters
Cel-Fi remains fully functional, even when there are other RF emitters present	



Mobile Network and Network Protection Benefits	Supports most network configurations of LTE and UMTS/WCDMA			
	Reduce returns, customer care calls, and provide the best product experience to users			
	Unlike wideband amplifiers, ensure the equipment capex benefits only your network—third-party macro cells are completely unaffected by Cel-Fi GO Network operators can be assured Cel-Fi devices are being used as intended, with registration and location lock option available			
	Completely network safe, doesn't degrade macro capacity Ultimate control of the devices in the field resides with the network operator			
	Registration options allow control over device deployment & may be used to prevent unauthorised use			
Versions Available	Mobile: GO unit + 12V CLA adapter			
	Stationary: GO unit + AC adapter			
Power	96 to 288 VDC via external supply			
	External supply: 100 to 240 VAC, 47 – 63Hz			
	Power consumption less than 15W per unit			
Antenna Requirements	50ohm antenna matching			
	Antenna cables require SMA-Male connectors			
	VSWR <2:1			
	Antennas should support appropriate device band frequencies			
Environmental	Ambient operating temperature: 0° to 65°C			
	Storage temperature: -25° to 65°C			
	Relative humidity: 0% to 95%, noncondensing			
	RoHS II 2011/65/EU			
	WEEE (2002/96/EC)			
	ErP 2009/125/EC			
Physical Specifications	Height: 255 mm	Width: 87 mm	Length: 28 mm	Weight: 600g
	SMA Female Donor Antenna Connector			
	SMA Female Service Antenna Connector			
	IP54 Rated			
Standards	<ul style="list-style-type: none"> <li style="width: 33%;">• R&TTE 1999/5/EC <li style="width: 33%;">• R&TTE 1999/519/EC <li style="width: 33%;">• EN 301 489-17, 23 <li style="width: 33%;">• EN 301 908-1, 11, 15 <li style="width: 33%;">• EN 300-328 <li style="width: 33%;">• EN 62311 <li style="width: 33%;">• R-NZ <li style="width: 33%;">• RCM Mark <li style="width: 33%;">• EN 60950-1:2006+A11/A12/A1/A2 <li style="width: 33%;">• CE Mark <li style="width: 33%;">• CISPR 25 <li style="width: 33%;">• ISO 763702 <li style="width: 33%;">• 3GPP TS 25.143 Rel.10 			
	<p>Certifications are regional; not all products need or have the same certifications. Please check the specific model number to determine exactly which certifications it has.</p>			



RF Specification	Band Specific Radio				
Model Number (Base)	Band 3	Band 5	Band 8	Band 28 (L)	Band 28 (U)
G31-3/5/28	Yes	Yes	-	Yes	-
G31-3/8/28L	Yes	-	Yes	Yes	-
G31-3/8/28U	Yes	-	Yes	-	Yes
Frequency DL (MHz)	1805 - 1880	869 - 894	924 - 960	758 - 788	773 - 803
Frequency UL (MHz)	1710 - 1785	824 - 849	880 - 915	703 - 733	718 - 748
Duplex Distance (MHz)	95 MHz	45 MHz	45 MHz	55 MHz	55 MHz
Maximum Relay Bandwidth (MHz)	20MHz	15MHz	20MHz	20MHz	20MHz
UL TX Power Max (Conducted) (dBm)	22dBm	20dBm	20dBm	20dBm	20dBm
DL TX Power Max (Conducted) (dBm)	10dBm per 5 MHz (16dBm max)	10dBm per 5 MHz (15dBm max)	10dBm per 5 MHz (16dBm max)	10dBm per 5 MHz (16dBm max)	10dBm per 5 MHz (16dBm max)

Why Rising Connection is using equipment designed and built by Nextivity?

- Designed and built for the most varied conditions in the world including Australian environment.
- Worldwide proven and respected Industry Experience including in the Australian Telecommunications Industry.
- Expertise support and customer focused staff.
- Up to date with technology and bringing to market the best quality technology available for Reliable Commercial use

This demonstrates to Rising Connection that you will have the Quality, Reliability and Product Support.