



B One

Impressive Capability with Incredible Value



Taking the best parts of the beloved **Surf SOHO** and **Balance 20** and putting them into one capable device.

Improved
Speeds &
Wi-Fi



Enterprise
Software
Features

Separate devices
into VLANs
Multiple SSIDs
WLAN Controller

Robust &
Reliable
Connectivity



Great
Value





Easy Integration with 5G with Starlink and OneWeb

- Bond multiple LEO Satellite Services connections together
- Load Balance your LEO Satellite Services with other internet services (5G/LTE, Cable, Fiber, FWA)
- Optimise your network with additional features requested specifically by LEO Satellite Services

Made for Fixed Wireless Access (FWA)

- Designed for use with MSP 5G/LTE Gateway devices
 - Bond various FWA together
Australia: Telstra / Optus / TPG (Vodafone)
New Zealand: Spark / OneNZ (Vodafone) / 2Degrees
 - Load Balance different internet sources (Cable, Fiber, 5G/LTE)
- Tether your phone with Wi-Fi WAN or USB



Long Term Support

- Firmware is constantly updated to patch vulnerabilities and improve performance
- Futureproof your network as Peplink never ends support for older devices



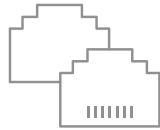
A Game Changer with **Peplink App**

- With a valid PrimeCare subscription, take advantage of all of SpeedFusion features without the need for an advanced network setup
- Easy to set up and use with our Companion App

Key **B One** Benefits

Dual WAN

architecture keeps you connected even when one of your Internet lines goes down



SpeedFusion

technology seamlessly bonds multiple Internet connections into one more reliable Internet feed

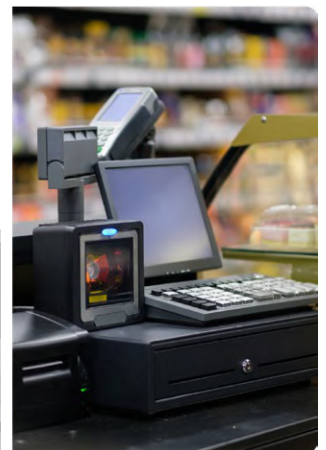


Use Cases

SOHO



RETAIL





Specifications

- **WAN Interface:** 2x 10/100/1000M Ethernet, 1x USB-C Interface
- **LAN Interface:** 4x 10/100/1000M Ethernet
- **Wi-Fi Interface:** Simultaneous Dual-Band (2.4GHz / 5GHz), Wi-Fi 6, 2X2 MIMO, Wi-Fi WAN and/or AP
- **SpeedFusion Features:** Hot Failover¹, WAN Smoothing¹, Bandwidth Bonding¹
- **Number of SpeedFusion VPN Peers:** 2 / 5¹
- **Router Throughput:** 1 Gbps
- **SpeedFusion VPN Throughput:** No Encryption - 400 Mbps, 256-bit AES - 200 Mbps
- **Recommended Users:** 1 - 50
- **AP Controller:** Standard
- **Maximum Number of AP Supported:** 30 / 50²
- **Antenna Connectors:** 2x RP-SMA Wi-Fi Antenna Connectors
- **Power Input:** Power Port: 10V – 30V DC
AC Adapter: AC Input 100V–240V / DC Output 12V
- **Power Consumption:** 19W (max.)
- **Dimensions:** 262 x 161 x 33.5mm
- **Weight:** 727 grams
- **Operating Temperature:** -40° – 45° C
- **Humidity:** 10% to 90% (non-condensing)
- **Certifications:** FCC, CE, RoHS
- **Warranty:** 1-Year Limited Warranty
- **Package Content:** 1x B One, 2x Dual Band Wi-Fi Antennas, 1x 12V 3A 4 Pin Power Supply

1. Requires a PrimeCare subscription, complimentary for the first year.
2. Available with licence add-on (AP-LC-50).



Ordering Information

Product Code	Regions
B-ONE-T-PRM	Global

Feature Add-on

Product Code	Description
PRM-A-1Y / PCP-A-1Y	PrimeCare A / PrimeCare+ A (1-Year)
PRM-A-2Y / PCP-A-2Y	PrimeCare A / PrimeCare+ A (2-Year)
PRM-A-4Y / PCP-A-4Y	PrimeCare A / PrimeCare+ A (4-Year)

Deep Dive

Software

Pepwave MAX Firmware

WAN

Support for PPPoE, Static IP, DHCP
WAN Link Health Check
Bandwidth Allowance Monitor
Support for Dynamic DNS services

LAN

DHCP Server for LAN Clients
Extended DHCP Option
DHCP Reservation
DNS Proxy for LAN Clients
VLAN on LAN Support

Security

Stateful Firewall
DoS Prevention
Web Blocking

Advanced QoS

Individual Bandwidth Limit
Application Prioritisation

- SIP, HTTPS, VPN QoS
- Custom Application QoS

Complete VPN Solution

SpeedFusion VPN/SpeedFusion

- Hot Failover
- Site-to-Site VPN
- 256-bit AES Encryption
- Pre-shared Key Authentication
- Dynamic Routing

X.509 Certificate Support
IPsec VPN (Network-to-Network)

Networking

NAT and IP Forwarding
Static Routes
Port Forwarding
Many to One, One to One NAT
NAT Pool
SIP ALG, H.323 ALG
UPnP, NAT-PMP

AP Controller

Support for Pepwave AP Series
Auto AP Discovery
Auto AP Firmware Management
AP Profile Configuration
Wi-Fi Usage Statistics

Captive Portal Support

Support for Wired and Wireless LAN clients
Support RADIUS Authentication
Time and Usage Quotas on Open Access Mode
Built-in Customisable Splash Page

Device Management

Web Administrative Interface
Command Line Interface
InControl Cloud Management
Email Notification
Active Client & Session Lists
Bandwidth Usage Statistics Syslog Service
SNMP v1, v2c and v3