



peplink

**MAX Orbit 2**



**MAX**  **Series**

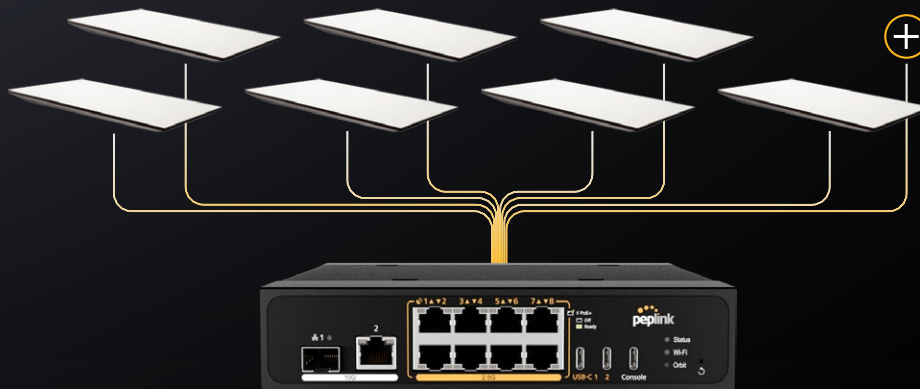
**Purpose-Built for Robust Multi-Orbit Connectivity**

**TAA**   
COMPLIANT



## Multi-Terminal Bonding Scales Bandwidth and Reliability

A single satellite terminal can't always deliver the bandwidth or reliability that serious operations demand. MAX Orbit lets you combine multiple Starlink, OneWeb, or other connections for greater speed and reliability.



Bond Multiple Satellite Connections

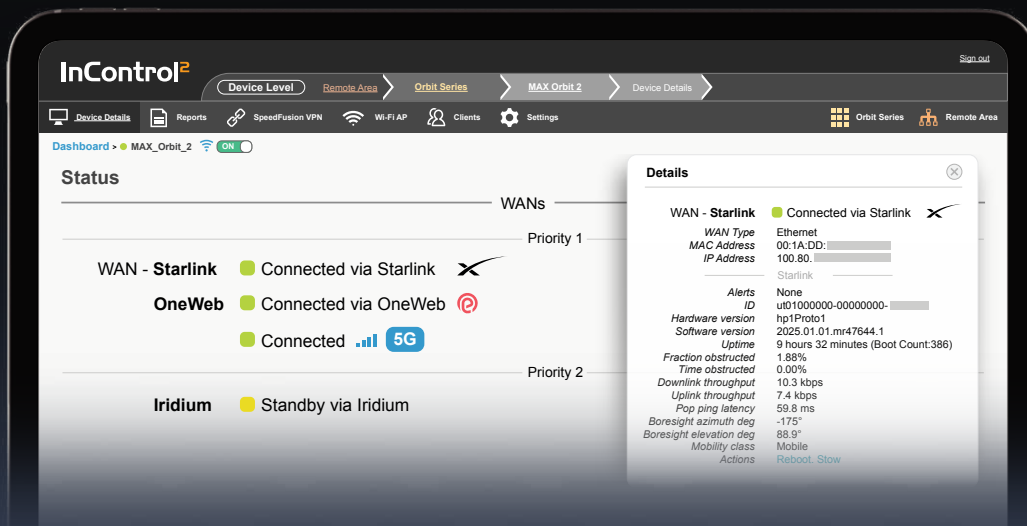
## Every Satellite Network Managed from One Place

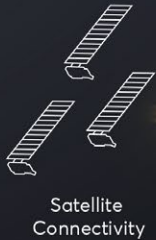
No need to hop portals. Peplink can manage Starlink, OneWeb, and Iridium, via InControl for unified cloud-based management.

STARLINK

OneWeb

iridium





## SpeedFusion Boost

### Keep Multi-Orbit Networks Running at Full Speed

Don't let satellite handovers, obstructions, or bad weather slow you down. SpeedFusion Boost prevents unstable satellite links from dragging down overall throughput, keeping your bonded multi-orbit networks fast, smooth, and efficient.

### SpeedFusion Score

#### Optimise Your Multi-Orbit Deployment

Available in InControl, SpeedFusion Score continuously evaluates the health, resilience, and performance of your bonded networks. Use these insights to instantly identify performance gaps and uncover opportunities for improvement. By adding more WAN connections and enabling additional SpeedFusion features, you can improve overall network performance and achieve a higher score.



SpeedFusion Boost • Smoothing •



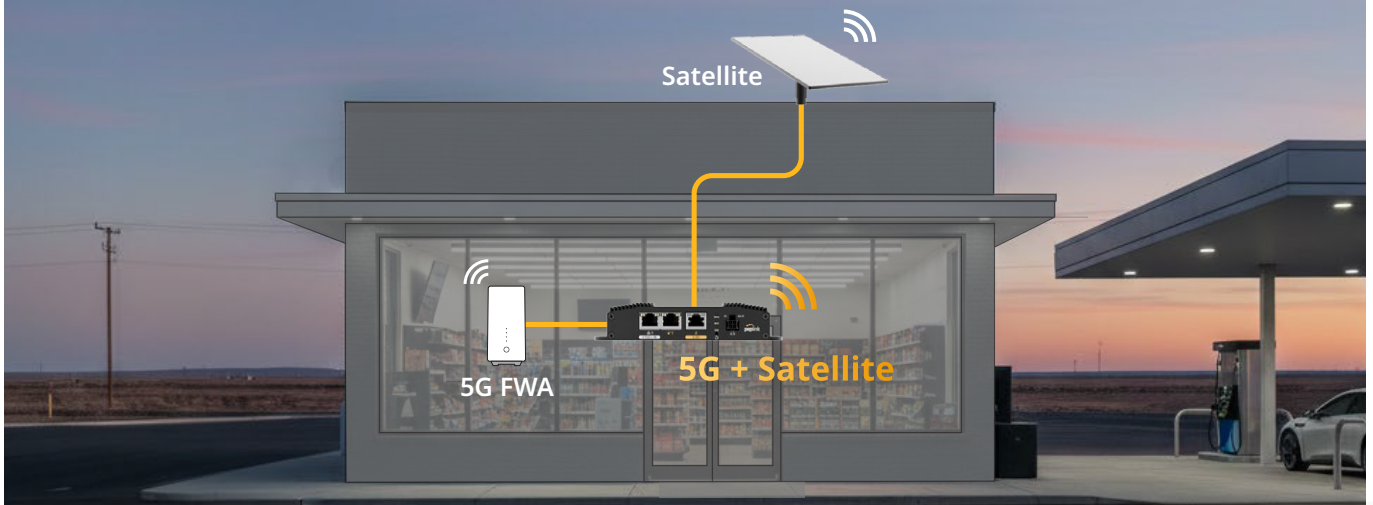
SpeedFusion Boost • Smoothing •



# PRODUCT DATASHEET MAX Orbit 2

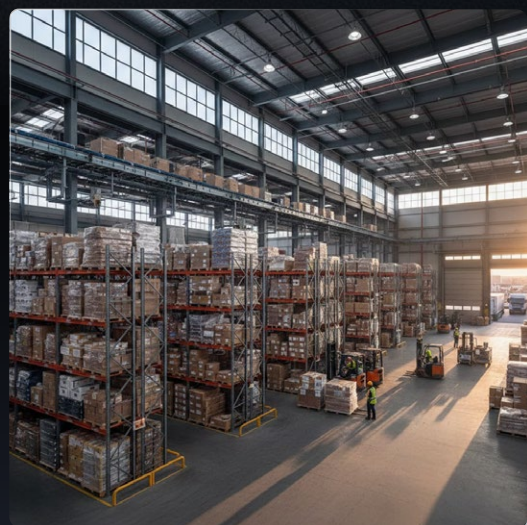
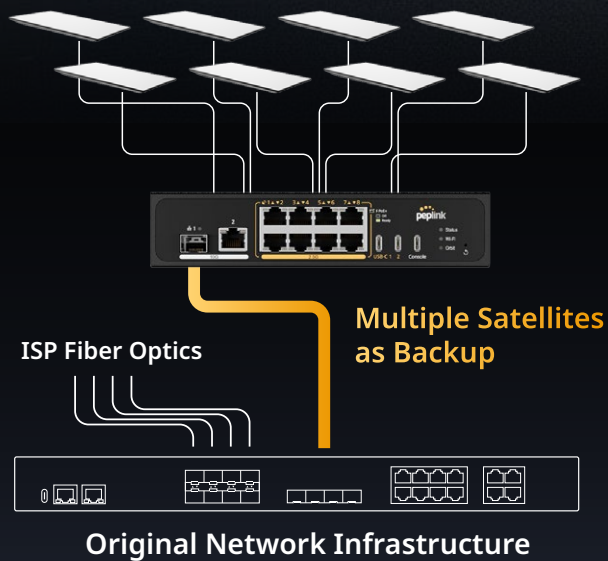
## 5G + Satellite for Expanded Capabilities

Expand uptime and performance while balancing cost by combining 5G and satellite bandwidth. Avoid overages and use each connection most efficiently.



## Back Anything Up, Anywhere

Back up critical fibre-optic links for cellular towers, ISPs, warehouses, data centres, energy & mining and any location that needs high reliability backup connectivity by bonding multiple satellite terminals and multiple networks.





# PRODUCT DATASHEET MAX Orbit 2

## Back Anything Up, Anywhere

Whether it's a mobile command unit, shipping vessel or a field deployment that relocates every week, MAX Orbit is engineered for life outside the server room. Integrated **GPS**, **rugged hardware**, and **vibration-tolerant design** mean you can have reliable multi-orbit connectivity anywhere you go.



GPS

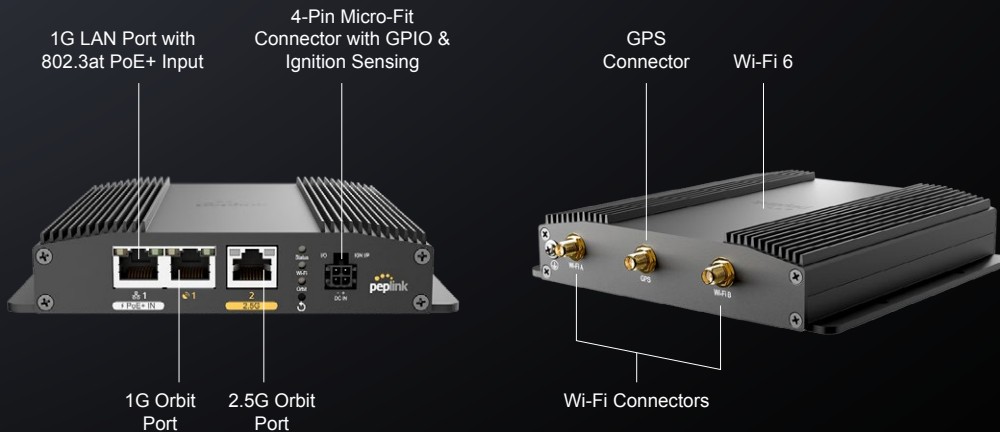


Rugged



Vibration





## Specifications

- **WAN Interface**  
1x 2.5G Multi-Gig Ethernet <sup>1 2</sup>  
1x 1G Ethernet <sup>2</sup>
- **LAN Interface**  
1x 1G Ethernet <sup>2</sup>
- **Wi-Fi Interface**  
Simultaneous Dual-Band (2.4GHz / 5GHz)  
Wi-Fi 6 2x2 MU-MIMO  
Wi-Fi WAN and/or AP
- **Antenna Connectors**  
2x RP-SMA Wi-Fi Antenna Connectors  
1x SMA GPS Antenna Connector
- **Router Throughput**  
1 Gbps
- **Recommended Users**  
1 – 150
- **AP & Switch Controller**  
Standard (max. 30 / 50 <sup>4</sup>)
- **Edge Computing**  
Docking (8GB Internal Storage)
- **SpeedFusion VPN Throughput**  
No Encryption: 400 Mbps  
256-bit AES: 200 Mbps
- **SpeedFusion Technologies**  
Hot Failover, Smoothing, Bandwidth Bonding, SpeedFusion Boost
- **Number of SpeedFusion VPN Peers**  
2 / 5 / 10 / 20 <sup>3</sup>
- **Power Input**  
AC Adapter: AC Input 100V – 240V / DC Output 12V  
4-Pin Micro-Fit Connector: 10V – 30V DC  
Power over Ethernet 802.3at
- **Power Consumption**  
9W (nominal) / 11W (max.)
- **Dimensions**  
5.78 x 5.08 x 1.15 inches / 146.8 x 129 x 29.3 mm
- **Weight**  
1.21 pounds / 550 grams
- **Operating Temperature**  
-40° – 149°F / -40° – 65°C
- **Humidity**  
15% – 95% (non-condensing)
- **Certifications**  
FCC, CE, RoHS, REACH
- **Warranty**  
1-Year Limited Warranty
- **Package Content**  
1x MAX Orbit 2  
1x 12V DC, 2A 4-Pin Power Supply  
2x Dual Band Wi-Fi Antennas  
1x GPS Active Antenna

1. The 2.5G port is backward compatible with GE and FE.

2. Ethernet ports include surge and ESD protection circuits to protect against over-voltage transients.

3. 5 SpeedFusion VPN Peers are enabled with PrimeCare Subscription. 10 or 20 SpeedFusion VPN peers can be enabled with software licence (PVN-LC-10 and PVN-LC-20).

4. Available as a licence add-on (AP-LC-50).



## Ordering Information

Product Code	Description
MAX-ORB-2-T-PRM	MAX Orbit 2

## Featured Add-on

Product Code	Description
PRM-B-1Y / PCP-B-1Y	PrimeCare B / PrimeCare+ B (1-Year)
PRM-B-2Y / PCP-B-2Y	PrimeCare B / PrimeCare+ B (2-Year)
PRM-B-4Y / PCP-B-4Y	PrimeCare B / PrimeCare+ B (4-Year)