



peplink

MAX Orbit 8



MAX  **Series**

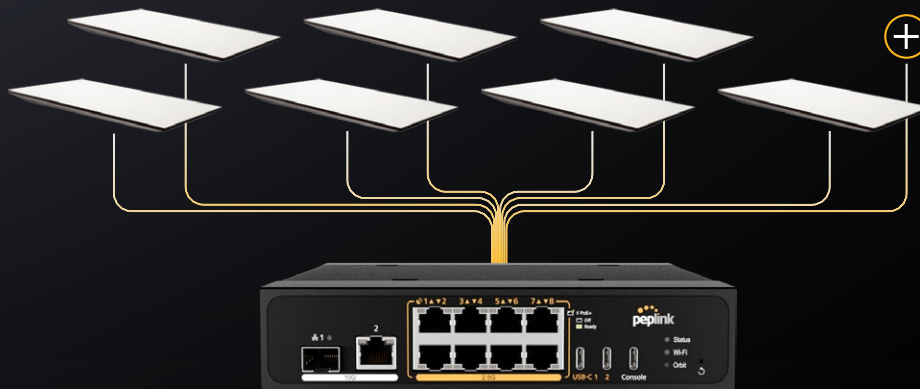
Purpose-Built for Robust Multi-Orbit Connectivity

TAA 
COMPLIANT



Multi-Terminal Bonding Scales Bandwidth and Reliability

A single satellite terminal can't always deliver the bandwidth or reliability that serious operations demand. MAX Orbit lets you combine multiple Starlink, OneWeb, or other connections for greater speed and reliability.



Bond Multiple Satellite Connections

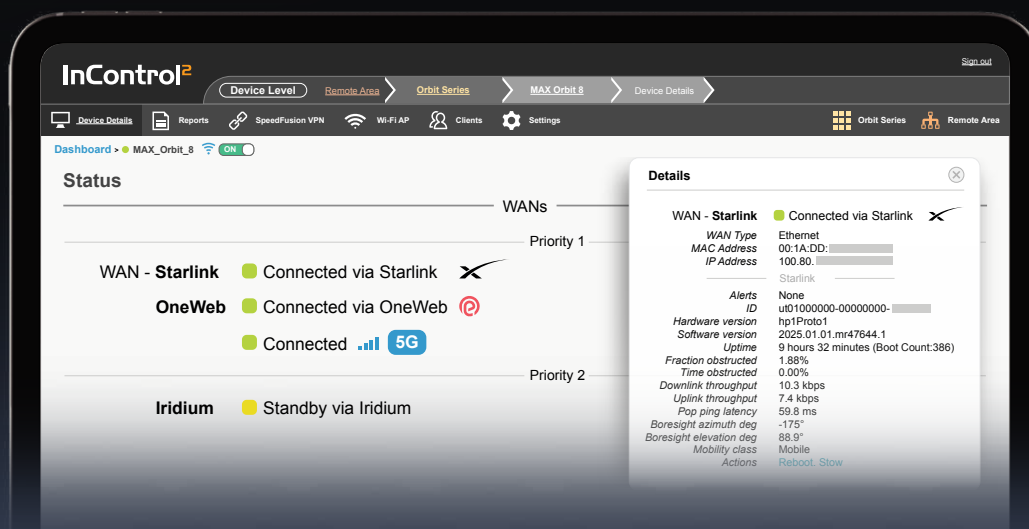
Every Satellite Network Managed from One Place

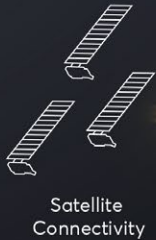
No need to hop portals. Peplink can manage Starlink, OneWeb, and Iridium, via InControl for unified cloud-based management.

STARLINK

OneWeb

iridium





SpeedFusion Boost

Keep Multi-Orbit Networks Running at Full Speed

Don't let satellite handovers, obstructions, or bad weather slow you down. SpeedFusion Boost prevents unstable satellite links from dragging down overall throughput, keeping your bonded multi-orbit networks fast, smooth, and efficient.

SpeedFusion Score

Optimise Your Multi-Orbit Deployment

Available in InControl, SpeedFusion Score continuously evaluates the health, resilience, and performance of your bonded networks. Use these insights to instantly identify performance gaps and uncover opportunities for improvement. By adding more WAN connections and enabling additional SpeedFusion features, you can improve overall network performance and achieve a higher score.



SpeedFusion Boost Smoothing

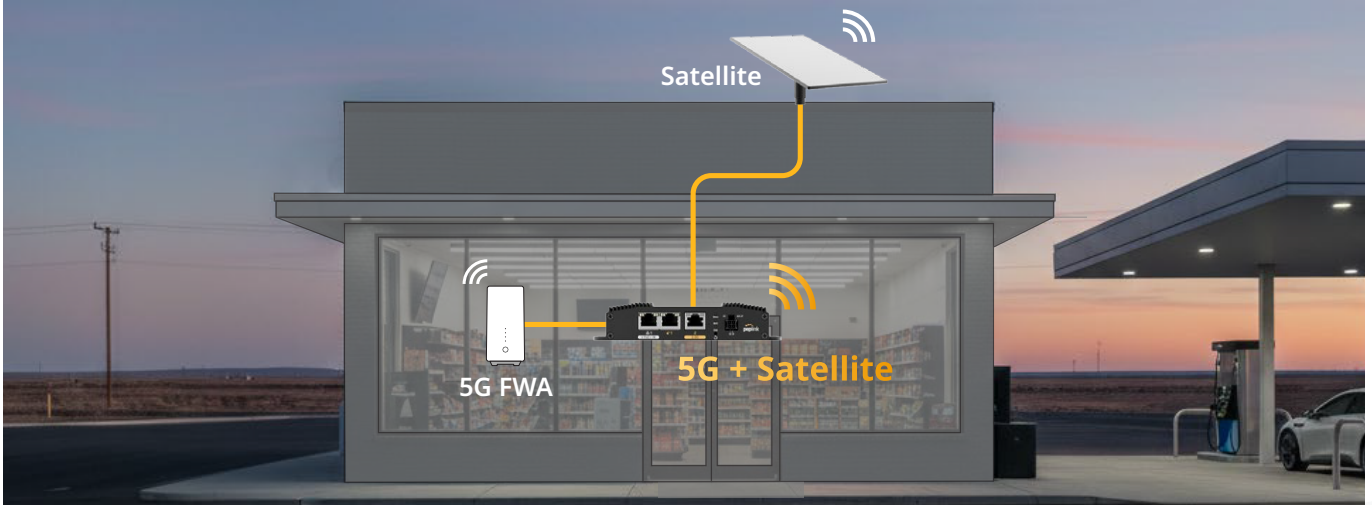


SpeedFusion Boost Smoothing



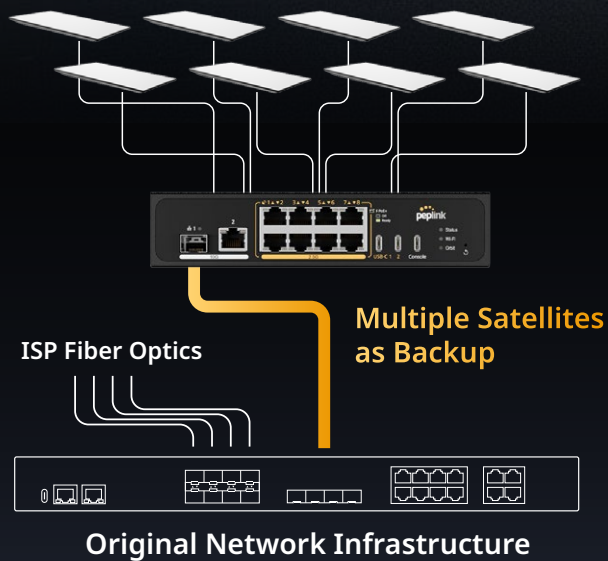
5G + Satellite for Expanded Capabilities

Expand uptime and performance while balancing cost by combining 5G and satellite bandwidth. Avoid overages and use each connection most efficiently.



Back Anything Up, Anywhere

Back up critical fibre-optic links for cellular towers, ISPs, warehouses, data centres, energy & mining and any location that needs high reliability backup connectivity by bonding multiple satellite terminals and multiple networks.





Built to Go Places

Whether it's a mobile command unit, shipping vessel or a field deployment that relocates every week, MAX Orbit is engineered for life outside the server room. Integrated **GPS**, **rugged hardware**, and **vibration-tolerant design** mean you can have reliable multi-orbit connectivity anywhere you go.



GPS

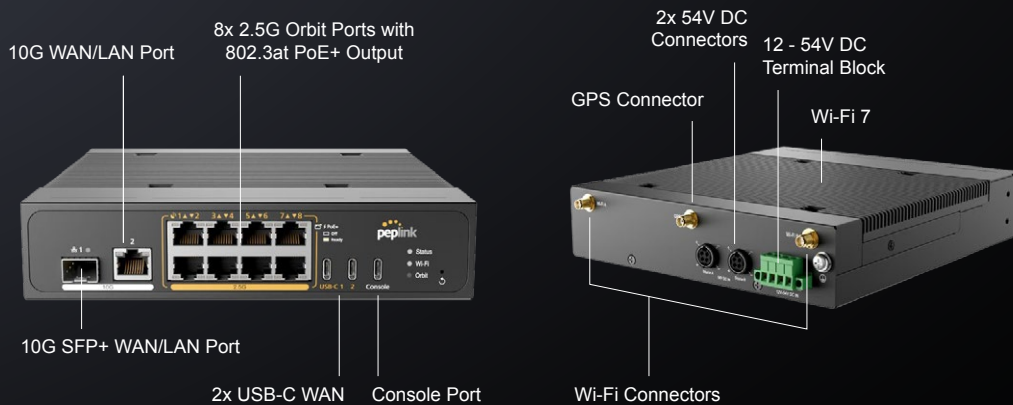


Rugged



Vibration





Specifications

- **WAN Interface**
8x 2.5G Multi-Gig Ethernet ¹
2x USB-C Interface
- **LAN Interface**
1x 10G Multi-Gig Ethernet ^{1,2}
1x 10G SFP+ ²
- **Wi-Fi Interface**
Simultaneous Dual-Band
(2.4GHz / 5GHz)
Wi-Fi 7 2x2 MIMO
Wi-Fi WAN and/or AP
- **Antenna Connectors**
2x RP-SMA Wi-Fi Antenna
Connectors
1x SMA GPS Antenna
Connector
- **Router Throughput**
4 Gbps
- **Recommended Users**
50 – 500
- **AP & Switch Controller**
Standard (max. 30 / 50 ⁴)
- **Edge Computing**
Docked (8GB Internal Storage /
External Storage via USB Port)
- **SpeedFusion VPN Throughput**
No Encryption: 1 Gbps
256-bit AES: 1 Gbps
- **SpeedFusion Technologies**
Hot Failover, Smoothing,
Bandwidth Bonding,
SpeedFusion Boost
- **Number of SpeedFusion VPN Peers**
2 / 30 ³
- **Power Input**
2x Power DIN: 54V DC
AC Adapter: AC Input 100V –
240V / DC
Output 54V
Terminal Block: 12V – 54V DC
- **Power Output**
Up to 8x 802.3at PoE+ ⁵
- **Power Consumption**
25W (nominal) /
50W (max. without PoE and
USB-C Output)
- **Total PoE Power Budget**
240W
- **Dimensions**
7.3 x 8 x 1.61 inches /
186 x 204.5 x 41 mm
- **Weight**
7.58 pounds / 3.44 kg
- **Operating Temperature**
-40° – 149°F / -40° – 65°C
- **Humidity**
15% – 95% (non-condensing)
- **Certifications**
FCC, CE, RoHS, REACH
- **Warranty**
1-Year Limited Warranty
- **Package Content**
1x MAX Orbit 8
1x 54V DC, 5.19A Power
Supply
2x Dual Band Wi-Fi Antennas
1x GPS Active Antenna
1x Ear Rack Mount Kit with
screws
1x Rubber Foot Pad Set

1. 10G ports are backward compatible with 5G, 2.5G, GE, and FE; 2.5G ports are backward compatible with GE and FE.
2. LAN ports can be configured for WAN or LAN via the Web Admin.
3. Requires a PrimeCare subscription, complimentary for the first year.
4. Available as a licence add-on (AP-LC-50).
5. A DC input voltage of 50V – 54V is required to enable PoE output.



Ordering Information

Product Code	Description
MAX-ORB-8-T-PRM	MAX Orbit 8

Featured Add-on

Product Code	Description
PRM-E-1Y / PCP-E-1Y	PrimeCare E / PrimeCare+ E (1-Year)
PRM-E-2Y / PCP-E-2Y	PrimeCare E / PrimeCare+ E (2-Year)
PRM-E-4Y / PCP-E-4Y	PrimeCare E / PrimeCare+ E (4-Year)